

## Product datasheet for TA383709M

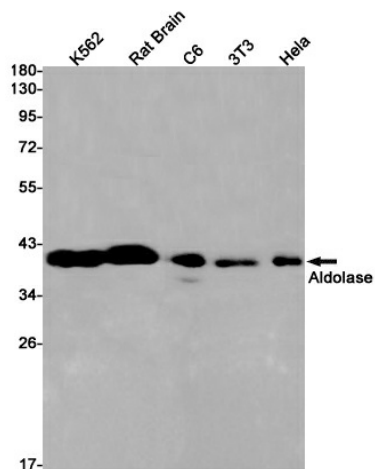
### Aldolase (ALDOA) Rabbit Monoclonal Antibody [Clone ID: R06-6A3]

#### Product data:

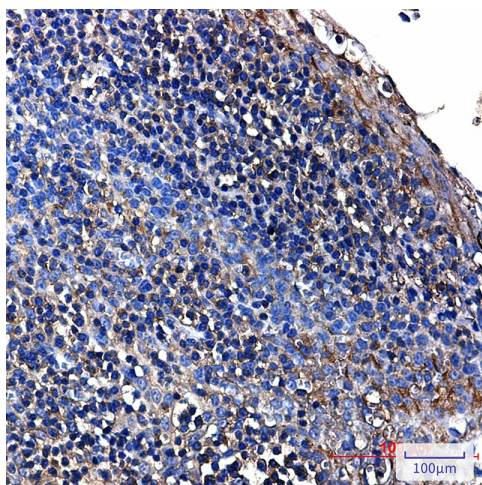
Product Type:	Primary Antibodies
Clone Name:	R06-6A3
Applications:	IF, IHC, WB
Recommended Dilution:	WB: 1/1000-1/5000 IHC: 1/20 ICC/IF: 1/20
Reactivity:	Human, Mouse, Rat
Host:	Rabbit
Isotype:	IgG
Clonality:	Monoclonal
Immunogen:	A synthetic peptide of human Aldolase
Formulation:	50mM Tris-Glycine(pH 7.4), 0.15M NaCl, 40% Glycerol, 0.01% Sodium azide and 0.05% BSA
Concentration:	lot specific
Purification:	Affinity Purified
Conjugation:	Unconjugated
Storage:	Store at 4°C short term. Aliquot and store at -20°C long term. Avoid freeze/thaw cycles.
Stability:	1 year
Predicted Protein Size:	Calculated MW: 39 kDa; Observed MW: 39 kDa
Gene Name:	aldolase, fructose-bisphosphate A
Database Link:	<a href="#">Entrez Gene 226 Human P04075</a>
Background:	Swiss-Prot Acc.P04075.Plays a key role in glycolysis and gluconeogenesis. In addition, may also function as scaffolding protein .
Synonyms:	ALDA; GSD12; MGC10942; MGC17716; MGC17767


[View online »](#)

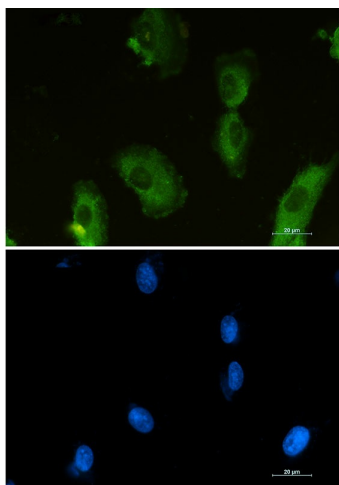
## Product images:



Western blot analysis of Aldolase in K562, rat Brain, C6, 3T3, HeLa lysates using Aldolase antibody.



Immunohistochemistry analysis of paraffin-embedded Human tonsil tissue using Aldolase antibody. High-pressure and temperature Sodium Citrate pH 6.0 was used for antigen retrieval.



Immunocytochemistry analysis of ALDOA (green) in U87-MG using ALDOA antibody, and DAPI (blue).