

Product datasheet for **TA383708**

Aldolase (ALDOA) Rabbit Polyclonal Antibody

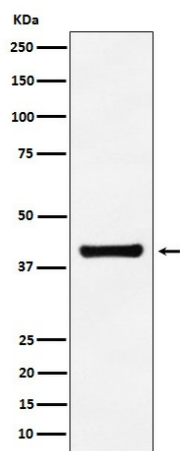
Product data:

Product Type:	Primary Antibodies
Applications:	IF, IHC, WB
Recommended Dilution:	WB: 1/500-1/2000 IHC: 1/50-1/200 ICC/IF: 1/50-1/200
Reactivity:	Human, Mouse, Rat
Host:	Rabbit
Isotype:	IgG
Clonality:	Polyclonal
Immunogen:	A synthesized peptide derived from human Aldolase
Formulation:	Rabbit IgG in phosphate buffered saline , pH 7.4, 150mM NaCl, 0.02% sodium azide and 50% glycerol.
Concentration:	lot specific
Purification:	Affinity Chromatography
Conjugation:	Unconjugated
Storage:	Store at 4°C short term. Aliquot and store at -20°C long term. Avoid freeze/thaw cycles.
Stability:	1 year
Predicted Protein Size:	39kDa
Gene Name:	aldolase, fructose-bisphosphate A
Database Link:	Entrez Gene 226 Human P04075
Background:	Swiss-Prot Acc.P04075.Plays a key role in glycolysis and gluconeogenesis. In addition, may also function as scaffolding protein.
Synonyms:	ALDA; GSD12; MGC10942; MGC17716; MGC17767



[View online »](#)

Product images:



Western blot analysis of Aldolase in A549 lysates using ALDOA antibody.