

## Product datasheet for **TA383707S**

### ALDH2 Rabbit Monoclonal Antibody [Clone ID: R08-9B4]

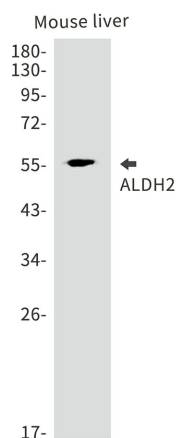
#### Product data:

Product Type:	Primary Antibodies
Clone Name:	R08-9B4
Applications:	IHC, IP, WB
Recommended Dilution:	WB: 1/1000 IHC: 1/20 IP: 1/20
Reactivity:	Human, Mouse
Host:	Rabbit
Isotype:	IgG
Clonality:	Monoclonal
Immunogen:	A synthetic peptide of human ALDH2
Formulation:	50mM Tris-Glycine(pH 7.4), 0.15M NaCl, 40% Glycerol, 0.01% Sodium azide and 0.05% BSA
Concentration:	lot specific
Purification:	Affinity Purified
Conjugation:	Unconjugated
Storage:	Store at 4°C short term. Aliquot and store at -20°C long term. Avoid freeze/thaw cycles.
Stability:	1 year
Predicted Protein Size:	Calculated MW: 56 kDa; Observed MW: 56 kDa
Gene Name:	aldehyde dehydrogenase 2 family (mitochondrial)
Database Link:	<a href="#">Entrez Gene 217 Human P05091</a>
Background:	Swiss-Prot Acc.P05091.Aldehyde dehydrogenase, mitochondrial
Synonyms:	ALDH-E2; ALDHI; ALDM; MGC1806

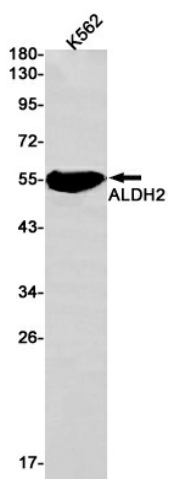


[View online »](#)

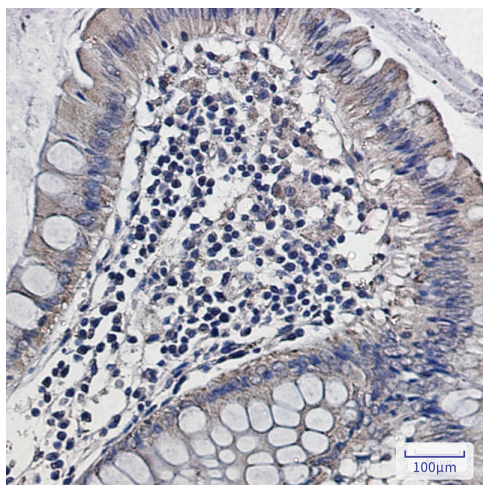
## Product images:



Western blot analysis of ALDH2 in mouse liver lysates using ALDH2 antibody.



Western blot analysis of ALDH2 in K562 lysates using ALDH2 antibody.



Immunohistochemistry analysis of paraffin-embedded Human colon cancer using ALDH2 antibody. High-pressure and temperature Sodium Citrate pH 6.0 was used for antigen retrieval.