

## Product datasheet for **TA383706**

### ALDH2 Rabbit Polyclonal Antibody

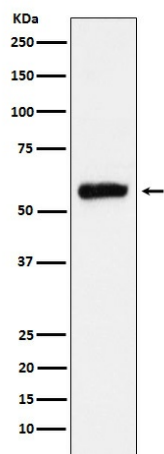
#### Product data:

|                         |  |
|-------------------------|--|
| Product Type:           | Primary Antibodies   |
| Applications:           | IF, IHC, IP, WB  |
| Recommended Dilution:   | WB: 1/500-1/2000<br>IHC: 1/50-1/200<br>ICC/IF: 1/50-1/200<br>IP: 1/50                              |
| Reactivity:             | Human, Mouse, Rat  |
| Host:                   | Rabbit   |
| Isotype:                | IgG  |
| Clonality:              | Polyclonal   |
| Immunogen:              | A synthesized peptide derived from human ALDH2   |
| Formulation:            | Rabbit IgG in phosphate buffered saline , pH 7.4, 150mM NaCl, 0.02% sodium azide and 50% glycerol. |
| Concentration:          | lot specific   |
| Purification:           | Affinity Chromatography  |
| Conjugation:            | Unconjugated   |
| Storage:                | Store at 4°C short term. Aliquot and store at -20°C long term. Avoid freeze/thaw cycles.           |
| Stability:              | 1 year   |
| Predicted Protein Size: | 56kDa  |
| Gene Name:              | aldehyde dehydrogenase 2 family (mitochondrial)  |
| Database Link:          | <a href="#">Entrez Gene 217 Human P05091</a>   |
| Background:             | Swiss-Prot Acc.P05091.Alcohol metabolism; ethanol degradation; acetate from ethanol: step 2/2.     |
| Synonyms:               | ALDH-E2; ALDHI; ALDM; MGC1806  |



[View online »](#)

## Product images:



Western blot analysis of ALDH2 in HepG2 lysates using ALDH2 antibody.