

Product datasheet for **TA383705M**

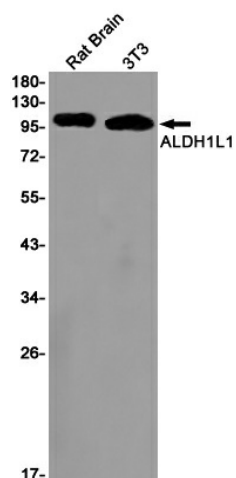
ALDH1L1 Rabbit Monoclonal Antibody [Clone ID: R06-2E9]

Product data:

Product Type:	Primary Antibodies
Clone Name:	R06-2E9
Applications:	WB
Recommended Dilution:	WB: 1/1000-1/5000
Reactivity:	Mouse, Rat
Host:	Rabbit
Isotype:	IgG
Clonality:	Monoclonal
Immunogen:	A synthetic peptide of human ALDH1L1
Formulation:	50mM Tris-Glycine(pH 7.4), 0.15M NaCl, 40% Glycerol, 0.01% Sodium azide and 0.05% BSA
Concentration:	lot specific
Purification:	Affinity Purified
Conjugation:	Unconjugated
Storage:	Store at 4°C short term. Aliquot and store at -20°C long term. Avoid freeze/thaw cycles.
Stability:	1 year
Predicted Protein Size:	Calculated MW: 99 kDa; Observed MW: 99 kDa
Gene Name:	aldehyde dehydrogenase 1 family member L1
Database Link:	O75891
Background:	Swiss-Prot Acc.O75891.CautionThe phosphoserine observed at Ser-354 in PubMed:24275569 may result from secondary neutral loss of pantetheine from the phosphodiester linked cofactor.
Synonyms:	10-FTHFDH; DKFZp781N0997; FTHFD


[View online »](#)

Product images:



Western blot analysis of ALDH1L1 in rat Brain, 3T3 lysates using ALDH1L1 antibody.