

Product datasheet for **TA383703S**

ALDH1A1 Rabbit Monoclonal Antibody [Clone ID: R09-3B9]

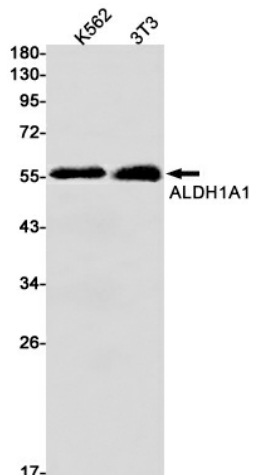
Product data:

Product Type:	Primary Antibodies
Clone Name:	R09-3B9
Applications:	IHC, IP, WB
Recommended Dilution:	WB: 1/1000 IHC: 1/20 IP: 1/20
Reactivity:	Human, Mouse
Host:	Rabbit
Isotype:	IgG
Clonality:	Monoclonal
Immunogen:	A synthetic peptide of human ALDH1A1
Formulation:	50mM Tris-Glycine(pH 7.4), 0.15M NaCl, 40% Glycerol, 0.01% Sodium azide and 0.05% BSA
Concentration:	lot specific
Purification:	Affinity Purified
Conjugation:	Unconjugated
Storage:	Store at 4°C short term. Aliquot and store at -20°C long term. Avoid freeze/thaw cycles.
Stability:	1 year
Predicted Protein Size:	Calculated MW: 55 kDa; Observed MW: 55 kDa
Gene Name:	aldehyde dehydrogenase 1 family member A1
Database Link:	Entrez Gene 216 Human P00352
Background:	Swiss-Prot Acc.P00352.
Synonyms:	ALDC; ALDH-E1; ALDH1; ALDH11; ALHDII; MGC2318; PUMB1; RALDH1

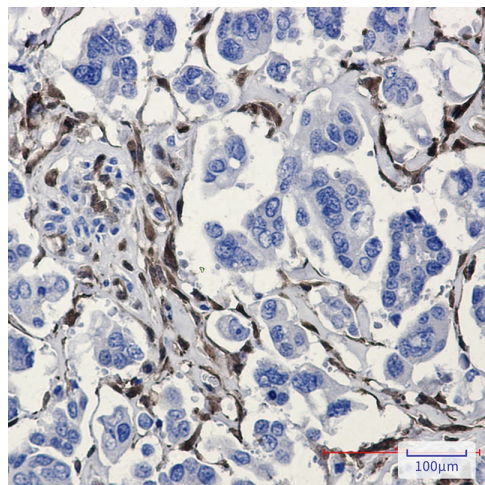


[View online »](#)

Product images:



Western blot analysis of ALDH1A1 in K562, 3T3 lysates using ALDH1A1 antibody.



Immunohistochemistry analysis of paraffin-embedded Human Cholangiocarcinoma using ALDH1A1 antibody. High-pressure and temperature Sodium Citrate pH 6.0 was used for antigen retrieval.