

Product datasheet for **TA383702S**

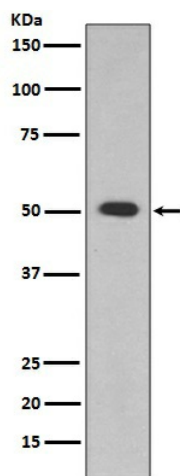
ALDH1A1 Rabbit Polyclonal Antibody

Product data:

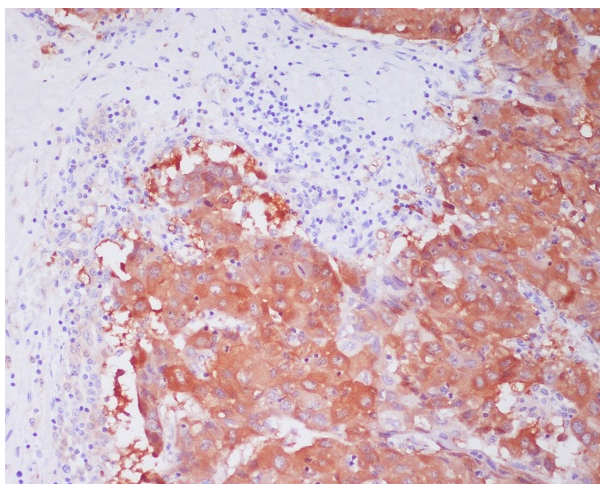
Product Type:	Primary Antibodies
Applications:	FC, IF, IHC, IP, WB
Recommended Dilution:	WB: 1/500-1/2000 IHC: 1/50-1/200 ICC/IF: 1/50-1/200 IP: 1/50 FC: 1/50
Reactivity:	Human, Mouse, Rat
Host:	Rabbit
Isotype:	IgG
Clonality:	Polyclonal
Immunogen:	A synthesized peptide derived from human ALDH1A1
Formulation:	Rabbit IgG in phosphate buffered saline , pH 7.4, 150mM NaCl, 0.02% sodium azide and 50% glycerol.
Concentration:	lot specific
Purification:	Affinity Chromatography
Conjugation:	Unconjugated
Storage:	Store at 4°C short term. Aliquot and store at -20°C long term. Avoid freeze/thaw cycles.
Stability:	1 year
Predicted Protein Size:	55kDa
Gene Name:	aldehyde dehydrogenase 1 family member A1
Database Link:	Entrez Gene 216 Human P00352
Background:	Swiss-Prot Acc.P00352.ALDH1A1 is a liver cytosolic isoform of acetaldehyde dehydrogenase and is involved in the major pathway of alcohol metabolism along with alcohol dehydrogenase . ALDH1A1 is also known as retinal dehydrogenase 1 and is involved in retinol metabolism, converting retinol to retinoic acid.
Synonyms:	ALDC; ALDH-E1; ALDH1; ALDH11; ALHDII; MGC2318; PUMB1; RALDH1



[View online »](#)

Product images:

Western blot analysis of ALDH1A1 in HepG2 lysates using ALDH1A1 antibody.



Immunohistochemistry analysis of paraffin-embedded Human liver cancer using ALDH1A1 antibody. High-pressure and temperature Sodium Citrate pH 6.0 was used for antigen retrieval.