

## Product datasheet for **TA383701M**

### **CD166 (ALCAM) Rabbit Monoclonal Antibody [Clone ID: R03-2E5]**

#### **Product data:**

Product Type:	Primary Antibodies
Clone Name:	R03-2E5
Applications:	IF, IHC, IP, WB
Recommended Dilution:	WB: 1/2000 IHC: 1/50 ICC/IF: 1/50 IP: 1/20
Reactivity:	Human, Mouse, Rat
Host:	Rabbit
Isotype:	IgG
Clonality:	Monoclonal
Immunogen:	A synthetic peptide of human CD166
Formulation:	50mM Tris-Glycine(pH 7.4), 0.15M NaCl, 40% Glycerol, 0.01% Sodium azide and 0.05% BSA
Concentration:	lot specific
Purification:	Affinity Purified
Conjugation:	Unconjugated
Storage:	Store at 4°C short term. Aliquot and store at -20°C long term. Avoid freeze/thaw cycles.
Stability:	1 year
Predicted Protein Size:	Calculated MW: 65 kDa; Observed MW: 105 kDa
Gene Name:	activated leukocyte cell adhesion molecule
Database Link:	<a href="#">Entrez Gene 214 Human Q13740</a>



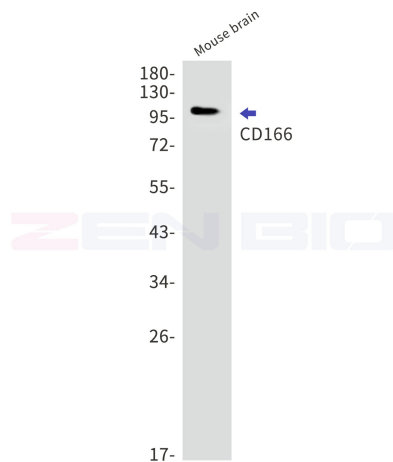
[View online »](#)

**Background:**

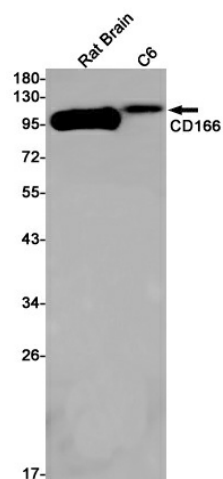
Swiss-Prot Acc.Q13740.Cell adhesion molecule that mediates both heterotypic cell-cell contacts via its interaction with CD6, as well as homotypic cell-cell contacts (PubMed:7760007, PubMed:15496415, PubMed:15048703, PubMed:16352806, PubMed:23169771, PubMed:24945728). Promotes T-cell activation and proliferation via its interactions with CD6 (PubMed:15048703, PubMed:16352806, PubMed:24945728). Contributes to the formation and maturation of the immunological synapse via its interactions with CD6 (PubMed:15294938, PubMed:16352806). Mediates homotypic interactions with cells that express ALCAM (PubMed:15496415, PubMed:16352806). Required for normal hematopoietic stem cell engraftment in the bone marrow (PubMed:24740813). Mediates attachment of dendritic cells onto endothelial cells via homotypic interaction (PubMed:23169771). Inhibits endothelial cell migration and promotes endothelial tube formation via homotypic interactions (PubMed:15496415, PubMed:23169771). Required for normal organization of the lymph vessel network. Required for normal hematopoietic stem cell engraftment in the bone marrow. Plays a role in hematopoiesis; required for normal numbers of hematopoietic stem cells in bone marrow. Promotes in vitro osteoblast proliferation and differentiation . Promotes neurite extension, axon growth and axon guidance; axons grow preferentially on surfaces that contain ALCAM. Mediates outgrowth and pathfinding for retinal ganglion cell axons .

**Synonyms:**

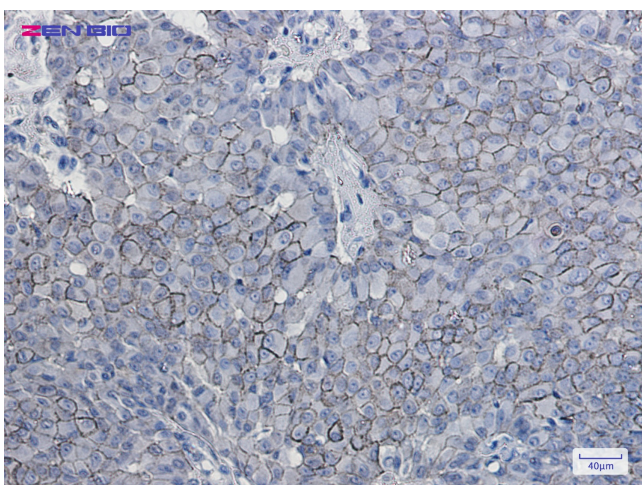
CD166; FLJ38514; MEMD; MGC71733

**Product images:**


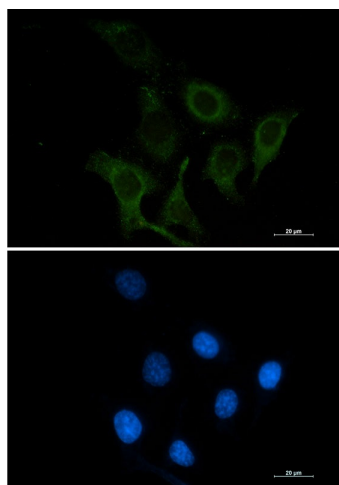
Western blot detection of CD166 in Mouse brain lysates using CD166 antibody. Predicted band size: 65kDa. Observed band size: 105kDa.



Western blot detection of CD166 in Rat Brain, C6 cell lysates using CD166 Rabbit mAb (1:1000 diluted). Predicted band size: 65 kDa. Observed band size: 105 kDa.



Immunohistochemistry of CD166 in paraffin-embedded Human breast cancer tissue using CD166 Rabbit mAb at dilution 1/50



Immunocytochemistry analysis of CD166 (green) in SKOV-3 using CD166 antibody, and DAPI (blue).