

Product datasheet for **TA383699**

ALB Rabbit Polyclonal Antibody

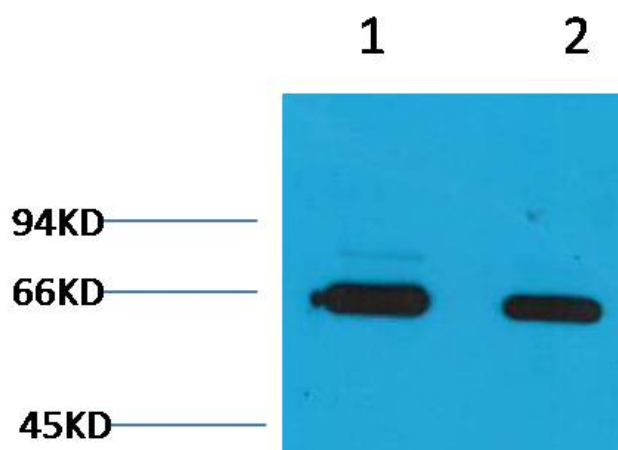
Product data:

Product Type:	Primary Antibodies
Applications:	ELISA, WB
Recommended Dilution:	WB: 1/2000-5000
Reactivity:	Bovine
Host:	Rabbit
Isotype:	IgG
Clonality:	Polyclonal
Immunogen:	Recombinant Protein of Bovine Serum Albumin
Formulation:	Liquid in PBS containing 50% glycerol, 0.5% BSA and 0.02% sodium azide, pH 7.3.
Concentration:	lot specific
Purification:	Affinity Purified
Conjugation:	Unconjugated
Storage:	Store at 4°C short term. Aliquot and store at -20°C long term. Avoid freeze/thaw cycles.
Stability:	1 year
Predicted Protein Size:	Observed MW (kDa):66
Database Link:	Entrez Gene 280717 Bovine P02769
Background:	Swiss-Prot Acc.P02769.
Synonyms:	albumin; DKFZp779N1935; PRO0883; PRO0903; PRO1341



[View online »](#)

Product images:



Western blot analysis of Bovine Serum Albumin in Bovine Serum Albumin lysates using Bovine Serum Albumin antibody.