

## Product datasheet for **TA383698S**

### ALAS2 Rabbit Monoclonal Antibody [Clone ID: R06-3A3]

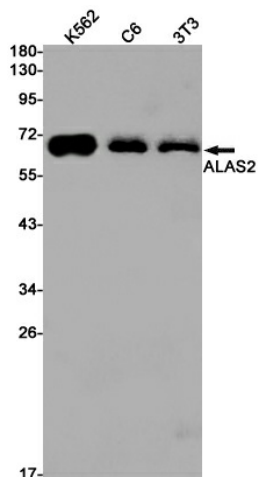
#### Product data:

Product Type:	Primary Antibodies
Clone Name:	R06-3A3
Applications:	IP, WB
Recommended Dilution:	WB: 1/1000 IP: 1/20
Reactivity:	Human, Mouse, Rat
Host:	Rabbit
Isotype:	IgG
Clonality:	Monoclonal
Immunogen:	A synthetic peptide of human ALAS2
Formulation:	50mM Tris-Glycine(pH 7.4), 0.15M NaCl, 40% Glycerol, 0.01% Sodium azide and 0.05% BSA
Concentration:	lot specific
Purification:	Affinity Purified
Conjugation:	Unconjugated
Storage:	Store at 4°C short term. Aliquot and store at -20°C long term. Avoid freeze/thaw cycles.
Stability:	1 year
Predicted Protein Size:	Calculated MW: 65 kDa; Observed MW: 65 kDa
Gene Name:	5'-aminolevulinate synthase 2
Database Link:	<a href="#">Entrez Gene 212 Human P22557</a>
Background:	Swiss-Prot Acc.P22557.MiscellaneousThere are two delta-ALA synthases in vertebrates: an erythroid- specific form and one (housekeeping) which is expressed in all tissues.
Synonyms:	ALAS-E; ALASE; ANH1; ASB; FLJ93603; XLSA



[View online »](#)

## Product images:



Western blot analysis of ALAS2 in K562, C6, 3T3 lysates using ALAS2 antibody.