

Product datasheet for **TA383692S**

AKT1 Rabbit Monoclonal Antibody [Clone ID: R01-4H6]

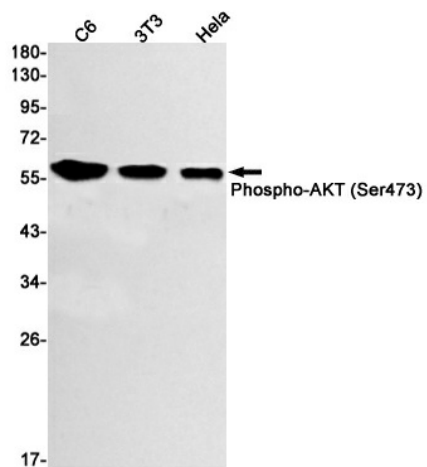
Product data:

Product Type:	Primary Antibodies
Clone Name:	R01-4H6
Applications:	WB
Recommended Dilution:	WB: 1/1000
Reactivity:	Human, Mouse, Rat
Host:	Rabbit
Isotype:	IgG
Clonality:	Monoclonal
Immunogen:	A synthetic phosphopeptide corresponding to residues surrounding Ser473 of human AKT1 (Phosphorylated)
Formulation:	50mM Tris-Glycine(pH 7.4), 0.15M NaCl, 40% Glycerol, 0.01% Sodium azide and 0.05% BSA
Concentration:	lot specific
Purification:	Affinity Purified
Conjugation:	Unconjugated
Storage:	Store at 4°C short term. Aliquot and store at -20°C long term. Avoid freeze/thaw cycles.
Stability:	1 year
Predicted Protein Size:	Calculated MW: 56 kDa; Observed MW: 56 kDa
Gene Name:	AKT serine/threonine kinase 1
Database Link:	Entrez Gene 207 Human P31749
Background:	Swiss-Prot Acc.P31749.
Synonyms:	AKT; C-AKT; MGC99656; PKB; PKB-ALPHA; PRKBA; RAC; RAC-ALPHA; RAC-PK-alpha



[View online »](#)

Product images:



Western blot analysis of Phospho-AKT (Ser473) in C6, 3T3, HeLa lysates using Phospho-AKT (Ser473) antibody.