

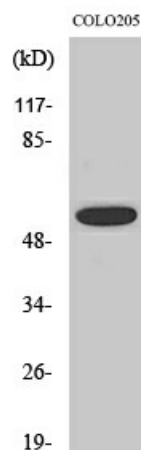
Product datasheet for **TA383690M**

AKT1 Rabbit Polyclonal Antibody

Product data:

Product Type:	Primary Antibodies
Applications:	ELISA, IF, IHC, WB
Recommended Dilution:	IF: 1/50-200 WB: 1/500-1/2000 IHC: 1/100-1/300 ELISA: 1/20000
Reactivity:	Human, Mouse, Rat
Host:	Rabbit
Isotype:	IgG
Clonality:	Polyclonal
Immunogen:	Synthesized phospho-peptide around the phosphorylation site of human Akt (phospho Thr308) (Phosphorylated)
Formulation:	Liquid in PBS containing 50% glycerol, 0.5% BSA and 0.02% sodium azide, pH 7.3.
Concentration:	lot specific
Purification:	Affinity Purified
Conjugation:	Unconjugated
Storage:	Store at 4°C short term. Aliquot and store at -20°C long term. Avoid freeze/thaw cycles.
Stability:	1 year
Predicted Protein Size:	Observed MW (kDa):55
Gene Name:	AKT serine/threonine kinase 1
Database Link:	Entrez Gene 207 Human P31749
Background:	Swiss-Prot Acc.P31749.
Synonyms:	AKT; C-AKT; MGC99656; PKB; PKB-ALPHA; PRKBA; RAC; RAC-ALPHA; RAC-PK-alpha


[View online »](#)

Product images:


Western blot analysis of Phospho-AKT (Thr308) in COLO205 lysates using Phospho-AKT (Thr308) antibody.