

Product datasheet for **TA383688S**

AMID (AIFM2) Rabbit Polyclonal Antibody

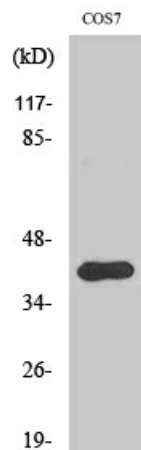
Product data:

Product Type:	Primary Antibodies
Applications:	ELISA, IF, IHC, WB
Recommended Dilution:	WB: 1/1000 IHC: 1/50 IF: 1/50
Reactivity:	Human, Mouse, Monkey
Host:	Rabbit
Isotype:	IgG
Clonality:	Polyclonal
Immunogen:	Synthesized peptide derived from the Internal region of human AMID. at AA range: 110-190
Formulation:	Liquid in PBS containing 50% glycerol, 0.5% BSA and 0.02% sodium azide, pH 7.3.
Concentration:	lot specific
Purification:	Affinity Purified
Conjugation:	Unconjugated
Storage:	Store at 4°C short term. Aliquot and store at -20°C long term. Avoid freeze/thaw cycles.
Stability:	1 year
Predicted Protein Size:	38 kDa
Gene Name:	apoptosis inducing factor, mitochondria associated 2
Database Link:	Entrez Gene 84883 Human Q9BRQ8
Synonyms:	5430437E11Rik; AMID; FLJ14497; OTTHUMP00000019740; PRG3; RP11-367H5.2



[View online »](#)

Product images:



Western blot analysis of FSP1 in COS7 lysates using FSP1 antibody.