

Product datasheet for **TA383687S**

Aif1 Rabbit Monoclonal Antibody [Clone ID: R06-8B5]

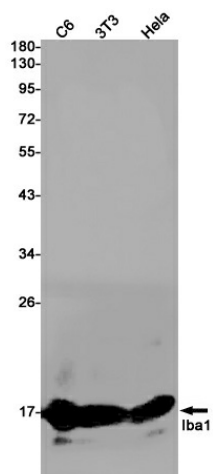
Product data:

Product Type:	Primary Antibodies
Clone Name:	R06-8B5
Applications:	IHC, WB
Recommended Dilution:	WB: 1/1000 IHC: 1/20-1/500
Reactivity:	Human, Mouse, Rat
Host:	Rabbit
Isotype:	IgG
Clonality:	Monoclonal
Immunogen:	A synthetic peptide of human Iba1
Formulation:	50mM Tris-Glycine(pH 7.4), 0.15M NaCl, 40% Glycerol, 0.01% Sodium azide and 0.05% BSA
Concentration:	lot specific
Purification:	Affinity Purified
Conjugation:	Unconjugated
Storage:	Store at 4°C short term. Aliquot and store at -20°C long term. Avoid freeze/thaw cycles.
Stability:	1 year
Predicted Protein Size:	Calculated MW: 17 kDa; Observed MW: 17 kDa
Gene Name:	allograft inflammatory factor 1
Database Link:	Entrez Gene 11629 Mouse O70200
Background:	Swiss-Prot Acc.O70200.Actin-binding protein that enhances membrane ruffling and RAC activation. Enhances the actin-bundling activity of LCP1. Binds calcium. Plays a role in RAC signaling and in phagocytosis. May play a role in macrophage activation and function. Promotes the proliferation of vascular smooth muscle cells and of T-lymphocytes. Enhances lymphocyte migration. Plays a role in vascular inflammation.
Synonyms:	AIF-1; Em:AF129756.17; G1; IBA1; IRT-1

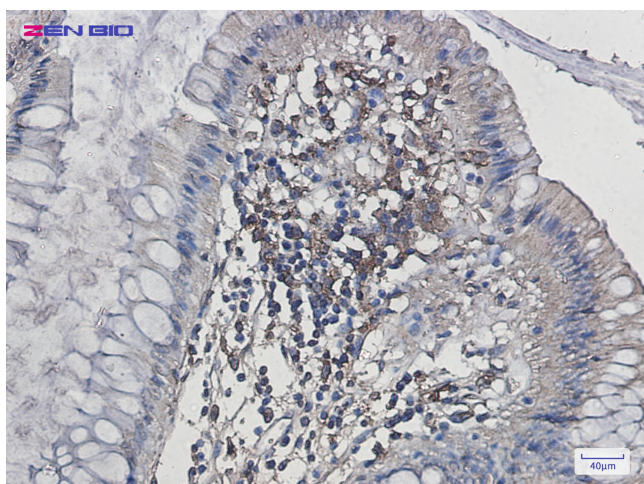


[View online »](#)

Product images:



Western blot detection of Iba1 in C6,3T3,Hela cell lysates using Iba1 Rabbit mAb(1:1000 diluted).Predicted band size:17kDa.Observed band size:17kDa.



Immunohistochemistry of Iba1 in paraffin-embedded Human colon cancer tissue using Iba1 Rabbit mAb at dilution 1/20