

## Product datasheet for **TA383684M**

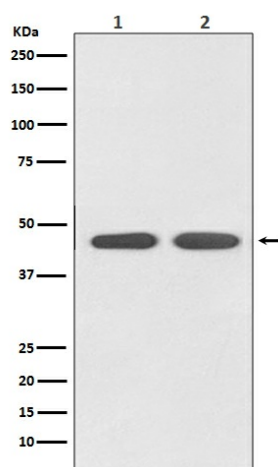
### Angiotensin II Type 1 Receptor (AGTR1) Rabbit Polyclonal Antibody

#### Product data:

Product Type:	Primary Antibodies
Applications:	WB
Recommended Dilution:	WB: 1/500-1/2000
Reactivity:	Human, Mouse, Rat
Host:	Rabbit
Isotype:	IgG
Clonality:	Polyclonal
Immunogen:	A synthesized peptide derived from human AGTR1
Formulation:	Rabbit IgG in phosphate buffered saline , pH 7.4, 150mM NaCl, 0.02% sodium azide and 50% glycerol.
Concentration:	lot specific
Purification:	Affinity Chromatography
Conjugation:	Unconjugated
Storage:	Store at 4°C short term. Aliquot and store at -20°C long term. Avoid freeze/thaw cycles.
Stability:	1 year
Predicted Protein Size:	41kDa
Gene Name:	angiotensin II receptor type 1
Database Link:	<a href="#">Entrez Gene 185 Human P30556</a>
Background:	Swiss-Prot Acc.P30556.Receptor for angiotensin II. Mediates its action by association with G proteins that activate a phosphatidylinositol-calcium second messenger system.
Synonyms:	AG2S; AGTR1A; AGTR1B; AT1; AT1AR; AT1B; AT1BR; AT1R; AT2R1; AT2R1A; AT2R1B; HAT1R



[View online »](#)

**Product images:**

Western blot analysis of AGTR1 in (1) HeLa lysates; (2) PC-12 lysates using Angiotensin II Type 1 Receptor antibody.