

## Product datasheet for **TA383683**

### AGR2 Rabbit Polyclonal Antibody

#### Product data:

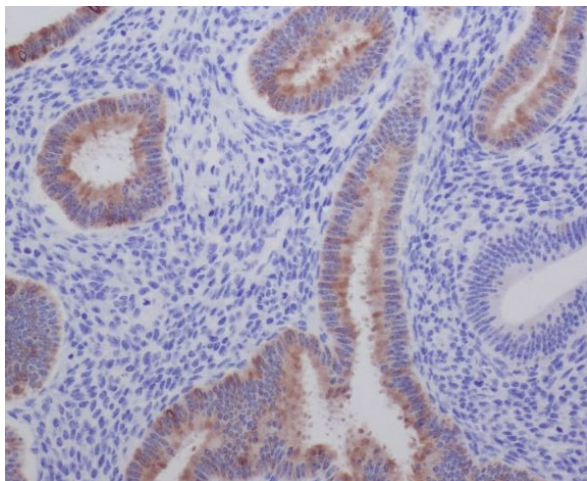
Product Type:	Primary Antibodies
Applications:	FC, IF, IHC, IP, WB
Recommended Dilution:	WB: 1/1000-1/2000 IHC: 1/50-1/200 ICC/IF: 1/50-1/200 IP: 1/20 FC: 1/20
Reactivity:	Human
Host:	Rabbit
Isotype:	IgG
Clonality:	Polyclonal
Immunogen:	A synthesized peptide derived from human AGR2
Formulation:	Rabbit IgG in phosphate buffered saline , pH 7.4, 150mM NaCl, 0.02% sodium azide and 50% glycerol.
Concentration:	lot specific
Purification:	Affinity Chromatography
Conjugation:	Unconjugated
Storage:	Store at 4°C short term. Aliquot and store at -20°C long term. Avoid freeze/thaw cycles.
Stability:	1 year
Predicted Protein Size:	17kDa
Gene Name:	anterior gradient 2, protein disulphide isomerase family member
Database Link:	<a href="#">Entrez Gene 10551 Human O95994</a>
Background:	Swiss-Prot Acc.O95994.AGR2 is a member of the protein disulfide isomerase (PDI) family of proteins and a homolog of the Xenopus laevis cement gland protein. Required for MUC2 post-transcriptional synthesis and secretion. May play a role in the production of mucus by intestinal cells (By similarity). Proto-oncogene that may play a role in cell migration, cell differentiation and cell growth.



[View online »](#)

Synonyms: AG-2; AG2; GOB-4; HAG-2; HPC8; PDIA17; XAG-2

**Product images:**



Immunohistochemistry analysis of paraffin-embedded Human uterus using AGR2 antibody. High-pressure and temperature Sodium Citrate pH 6.0 was used for antigen retrieval.