

Product datasheet for **TA383678**

ADCY5 Rabbit Polyclonal Antibody

Product data:

Product Type:	Primary Antibodies
Applications:	ELISA, IF, IHC, WB
Recommended Dilution:	WB: 1/500-1/2000 IHC: 1/100-1/300 IF: 1/200-1/1000 ELISA: 1/10000
Reactivity:	Human, Mouse, Rat
Host:	Rabbit
Isotype:	IgG
Clonality:	Polyclonal
Immunogen:	The antiserum was produced against synthesized peptide derived from human ADCY5/6. AA range:931-980
Formulation:	Liquid in PBS containing 50% glycerol, 0.5% BSA and 0.02% sodium azide, pH 7.3.
Concentration:	lot specific
Purification:	Affinity Chromatography
Conjugation:	Unconjugated
Storage:	Store at 4°C short term. Aliquot and store at -20°C long term. Avoid freeze/thaw cycles.
Stability:	1 year
Predicted Protein Size:	Observed MW (kDa):138
Gene Name:	adenylate cyclase 5
Database Link:	Entrez Gene 111 Human O95622



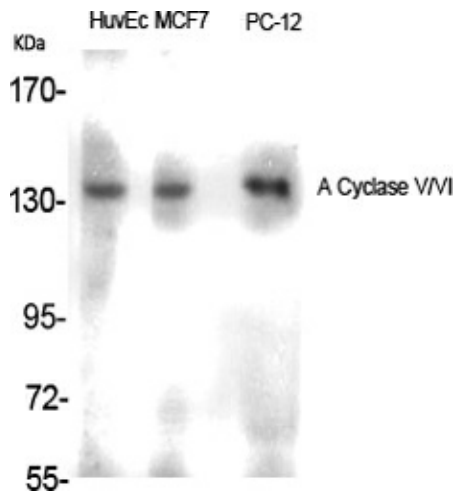
[View online »](#)

Background:

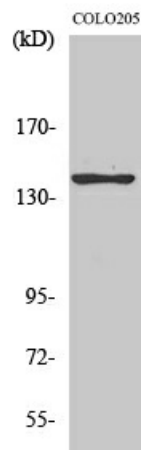
Swiss-Prot Acc.O95622/O43306.ADCY5 encodes a member (adenylate cyclase 5) of the membrane-bound adenylyl cyclase enzymes. Adenylyl cyclases mediate G protein-coupled receptor signaling through the synthesis of the second messenger cAMP. Activity of the encoded protein is stimulated by the Gs alpha subunit of G protein-coupled receptors and is inhibited by protein kinase A, calcium and Gi alpha subunits. Single nucleotide polymorphisms in this gene may be associated with low birth weight and type 2 diabetes. Alternatively spliced transcript variants that encode different isoforms have been observed for ADCY5.

Synonyms:

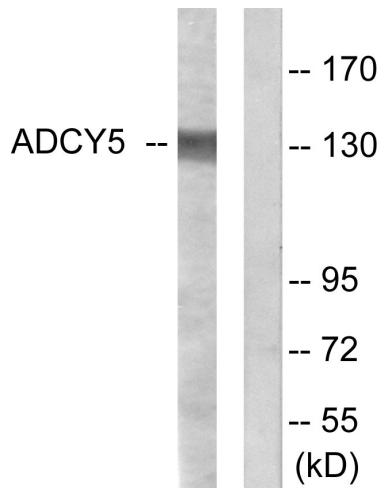
AC5

Product images:


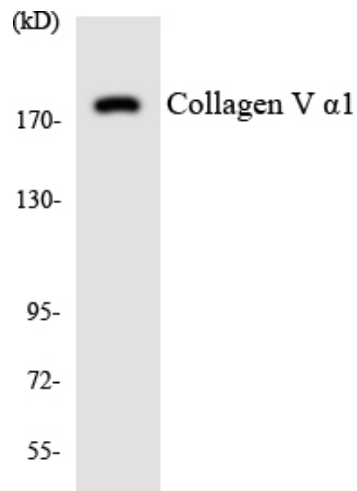
Western blot analysis of ADCY5/6 in various lysates using ADCY5/6 antibody.



Western blot analysis of ADCY5/6 in COLO205 lysates using A Cyclase V/VI antibody.



Western blot analysis of ADCY5/6 in COLO25 lysates using ADCY5/6 antibody. The lane on the right is blocked with the synthesized peptide.



Western blot analysis of ADCY5/6 in HUVEC lysates using ADCY5/6 antibody.