

## Product datasheet for **TA383677M**

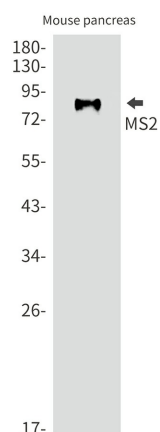
### **ADAM8 Rabbit Monoclonal Antibody [Clone ID: R07-8D8]**

#### **Product data:**

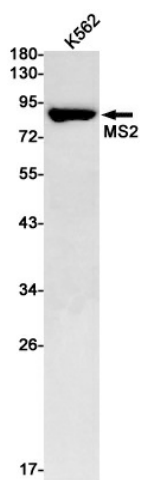
Product Type:	Primary Antibodies
Clone Name:	R07-8D8
Applications:	IP, WB
Recommended Dilution:	WB: 1/1000 IP: 1/20
Reactivity:	Human, Mouse
Host:	Rabbit
Isotype:	IgG
Clonality:	Monoclonal
Immunogen:	A synthetic peptide of MS2
Formulation:	50mM Tris-Glycine(pH 7.4), 0.15M NaCl, 40% Glycerol, 0.01% Sodium azide and 0.05% BSA
Concentration:	lot specific
Purification:	Affinity Purified
Conjugation:	Unconjugated
Storage:	Store at 4°C short term. Aliquot and store at -20°C long term. Avoid freeze/thaw cycles.
Stability:	1 year
Predicted Protein Size:	Calculated MW: 89 kDa; Observed MW: 89 kDa
Gene Name:	ADAM metallopeptidase domain 8
Database Link:	<a href="#">Entrez Gene 101 Human P78325</a>
Background:	Swiss-Prot Acc.P78325.Possible involvement in extravasation of leukocytes.
Synonyms:	CD156; MGC134985; MS2

[View online »](#)

## Product images:



Western blot analysis of MS2 in mouse pancreas lysates using MS2 antibody.



Western blot analysis of MS2 in K562 lysates using MS2 antibody.