

## Product datasheet for **TA383676**

### ADAM10 Rabbit Polyclonal Antibody

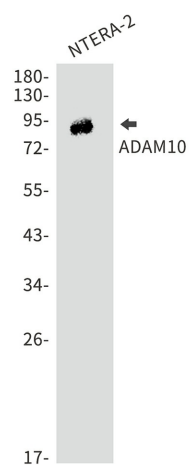
#### Product data:

|                         |  |
|-------------------------|--|
| Product Type:           | Primary Antibodies   |
| Applications:           | IP, WB   |
| Recommended Dilution:   | WB: 1/1000-1/5000<br>IP: 1/20-1/50   |
| Reactivity:             | Human  |
| Host:                   | Rabbit   |
| Isotype:                | IgG  |
| Clonality:              | Polyclonal   |
| Immunogen:              | A synthetic peptide of human ADAM10  |
| Formulation:            | 50mM Tris-Glycine(pH 7.4), 0.15M NaCl, 40% Glycerol, 0.01% Sodium azide and 0.05% BSA    |
| Concentration:          | lot specific   |
| Purification:           | Affinity Purified  |
| Conjugation:            | Unconjugated   |
| Storage:                | Store at 4°C short term. Aliquot and store at -20°C long term. Avoid freeze/thaw cycles. |
| Stability:              | 1 year   |
| Predicted Protein Size: | Calculated MW: 84 kDa; Observed MW: 90,68 kDa  |
| Gene Name:              | ADAM metallopeptidase domain 10  |
| Database Link:          | <a href="#">Entrez Gene 102 Human O14672</a>   |
| Background:             | Swiss-Prot Acc.O14672.   |
| Synonyms:               | AD10; CD156c; CDw156; HsT18717; kuz; kuzbanian; MADM                                     |



[View online »](#)

## Product images:



Western blot analysis of ADAM10 in NTERA-2 lysates using ADAM10 antibody.