

## Product datasheet for **TA383675S**

### Arp3 (ACTR3) Rabbit Monoclonal Antibody [Clone ID: R08-2A2]

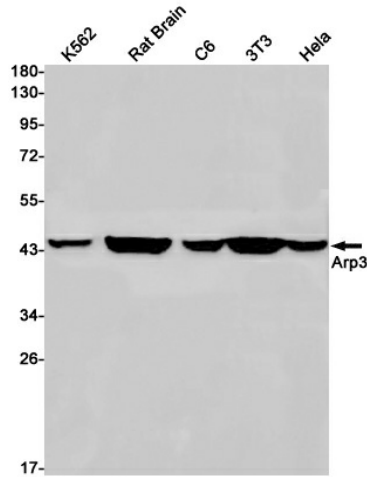
#### Product data:

Product Type:	Primary Antibodies
Clone Name:	R08-2A2
Applications:	IF, IHC, WB
Recommended Dilution:	WB: 1/1000 IHC: 1/50 ICC/IF: 1/20
Reactivity:	Human, Mouse, Rat
Host:	Rabbit
Isotype:	IgG
Clonality:	Monoclonal
Immunogen:	A synthetic peptide of human Arp3
Formulation:	50mM Tris-Glycine(pH 7.4), 0.15M NaCl, 40% Glycerol, 0.01% Sodium azide and 0.05% BSA
Concentration:	lot specific
Purification:	Affinity Purified
Conjugation:	Unconjugated
Storage:	Store at 4°C short term. Aliquot and store at -20°C long term. Avoid freeze/thaw cycles.
Stability:	1 year
Predicted Protein Size:	Calculated MW: 47 kDa; Observed MW: 47 kDa
Gene Name:	ARP3 actin-related protein 3 homolog (yeast)
Database Link:	<a href="#">Entrez Gene 10096 Human P61158</a>
Background:	Swiss-Prot Acc.P61158.Functions as ATP-binding component of the Arp2/3 complex which is involved in regulation of actin polymerization and together with an activating nucleation-promoting factor (NPF) mediates the formation of branched actin networks. Seems to contact the pointed end of the daughter actin filament. Plays a role in ciliogenesis.
Synonyms:	ARP3

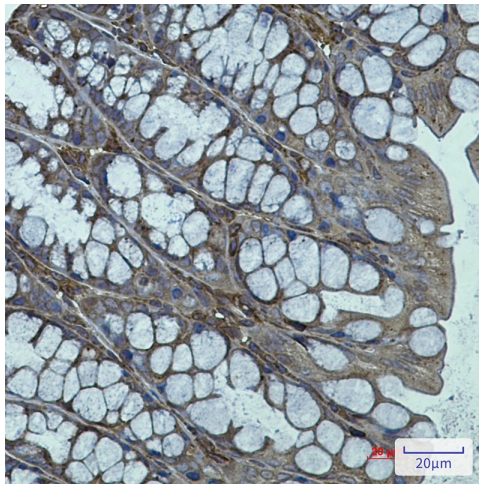


[View online »](#)

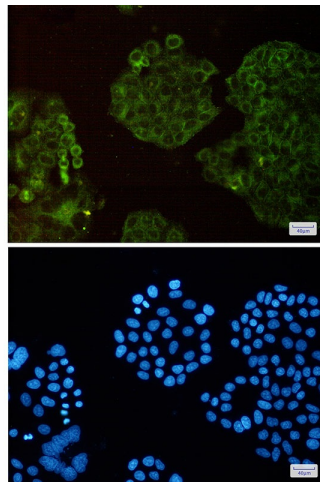
Product images:



Western blot analysis of Arp3 in K562, rat Brain, C6, 3T3, HeLa lysates using Arp3 antibody.



Immunohistochemistry analysis of paraffin-embedded mouse colon using Actin Related Protein 3 antibody. High-pressure and temperature Sodium Citrate pH 6.0 was used for antigen retrieval.



Immunocytochemistry analysis of Arp3 (green) in HeLa cells using Arp3 antibody, and DAPI (blue)

