

Product datasheet for **TA383674M**

ACTN2 Rabbit Monoclonal Antibody [Clone ID: R05-7J8]

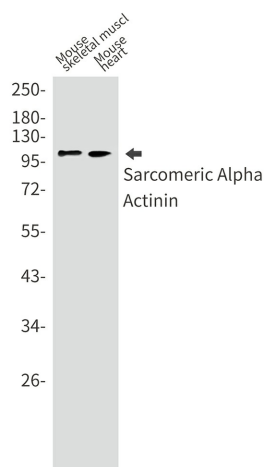
Product data:

Product Type:	Primary Antibodies
Clone Name:	R05-7J8
Applications:	IHC, IP, WB
Recommended Dilution:	WB: 1/2000 IHC: 1/50 IP: 1/20
Reactivity:	Human, Mouse, Rat
Host:	Rabbit
Isotype:	IgG
Clonality:	Monoclonal
Immunogen:	A synthetic peptide of human Sarcomeric Alpha Actinin
Formulation:	50mM Tris-Glycine(pH 7.4), 0.15M NaCl, 40% Glycerol, 0.01% Sodium azide and 0.05% BSA
Concentration:	lot specific
Purification:	Affinity Purified
Conjugation:	Unconjugated
Storage:	Store at 4°C short term. Aliquot and store at -20°C long term. Avoid freeze/thaw cycles.
Stability:	1 year
Predicted Protein Size:	Calculated MW: 104 kDa; Observed MW: 104 kDa
Gene Name:	actinin alpha 2
Database Link:	Entrez Gene 88 Human P35609
Background:	Swiss-Prot Acc.P35609.F-actin cross-linking protein which is thought to anchor actin to a variety of intracellular structures. This is a bundling protein.RegionsFeature keyPosition(s)Description
Synonyms:	CMD1AA

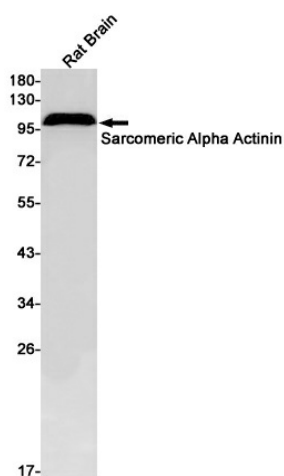


[View online »](#)

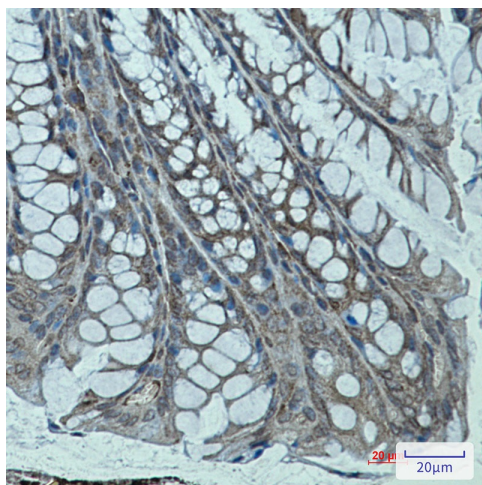
Product images:



Western blot analysis of Sarcomeric Alpha Actinin in mouse skeletal muscle, mouse heart lysates using Sarcomeric Alpha Actinin antibody.



Western blot analysis of Sarcomeric Alpha Actinin in rat Brain lysates using Sarcomeric Alpha Actinin antibody



Immunohistochemistry analysis of paraffin-embedded mouse colon using Sarcomeric alpha Actinin antibody. High-pressure and temperature Sodium Citrate pH 6.0 was used for antigen retrieval.