

## Product datasheet for **TA383673**

### ACTN2 Rabbit Polyclonal Antibody

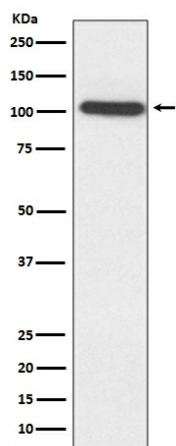
#### Product data:

Product Type:	Primary Antibodies
Applications:	IHC, IP, WB
Recommended Dilution:	WB: 1/500-1/2000 IHC: 1/50-1/200 IP: 1/50
Reactivity:	Human, Mouse, Rat
Host:	Rabbit
Isotype:	IgG
Clonality:	Polyclonal
Immunogen:	A synthesized peptide derived from human ACTN2
Formulation:	Rabbit IgG in phosphate buffered saline , pH 7.4, 150mM NaCl, 0.02% sodium azide and 50% glycerol.
Concentration:	lot specific
Purification:	Affinity Chromatography
Conjugation:	Unconjugated
Storage:	Store at 4°C short term. Aliquot and store at -20°C long term. Avoid freeze/thaw cycles.
Stability:	1 year
Predicted Protein Size:	103kDa
Gene Name:	actinin alpha 2
Database Link:	<a href="#">Entrez Gene 88 Human P35609</a>
Background:	Swiss-Prot Acc.P35609.F-actin cross-linking protein which is thought to anchor actin to a variety of intracellular structures. This is a bundling protein.
Synonyms:	CMD1AA



[View online »](#)

## Product images:



Western blot analysis of ACTN2 in HepG2 lysates using Sarcomeric alpha Actinin antibody.