

## Product datasheet for **TA383671**

### **BAF53A (ACTL6A) Rabbit Polyclonal Antibody**

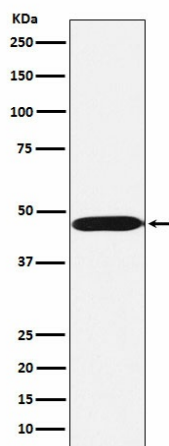
#### **Product data:**

<b>Product Type:</b>	Primary Antibodies
<b>Applications:</b>	IF, IHC, IP, WB
<b>Recommended Dilution:</b>	WB: 1/500-1/2000 IHC: 1/50-1/200 ICC/IF: 1/50-1/200 IP: 1/50
<b>Reactivity:</b>	Human, Mouse, Rat
<b>Host:</b>	Rabbit
<b>Isotype:</b>	IgG
<b>Clonality:</b>	Polyclonal
<b>Immunogen:</b>	A synthesized peptide derived from human ACTL6A
<b>Formulation:</b>	Rabbit IgG in phosphate buffered saline , pH 7.4, 150mM NaCl, 0.02% sodium azide and 50% glycerol.
<b>Concentration:</b>	lot specific
<b>Purification:</b>	Affinity Chromatography
<b>Conjugation:</b>	Unconjugated
<b>Storage:</b>	Store at 4°C short term. Aliquot and store at -20°C long term. Avoid freeze/thaw cycles.
<b>Stability:</b>	1 year
<b>Predicted Protein Size:</b>	47kDa
<b>Gene Name:</b>	actin like 6A
<b>Database Link:</b>	<a href="#">Entrez Gene 86 Human O96019</a>
<b>Background:</b>	Swiss-Prot Acc.O96019.Involved in transcriptional activation and repression of select genes by chromatin remodeling (alteration of DNA-nucleosome topology). Required for maximal ATPase activity of SMARCA4/BRG1/BAF190A and for association of the SMARCA4/BRG1/BAF190A containing remodeling complex BAF with chromatin/nuclear matrix.
<b>Synonyms:</b>	ACTL6; Arp4; ARPN-BETA; ArpNbeta; BAF53; BAF53A; INO80K; MGC5382



[View online »](#)

## Product images:



Western blot analysis of ACTL6A in Ramos lysates using ACTL6A antibody.