

## Product datasheet for **TA383667**

### alpha smooth muscle Actin (ACTA2) Rabbit Monoclonal Antibody [Clone ID: R01-8C7]

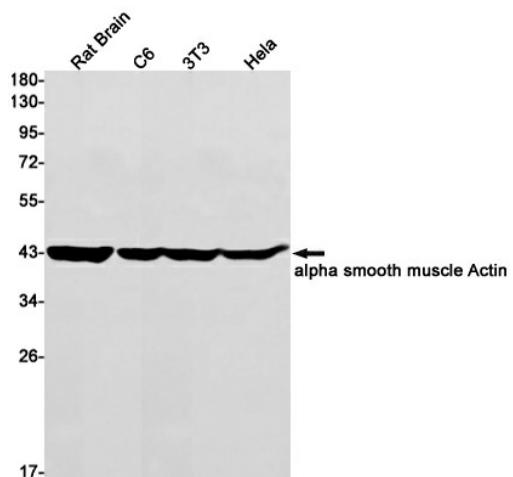
#### Product data:

Product Type:	Primary Antibodies
Clone Name:	R01-8C7
Applications:	IHC, WB
Recommended Dilution:	WB: 1/1000 IHC: 1/50
Reactivity:	Human, Mouse, Rat
Host:	Rabbit
Isotype:	IgG
Clonality:	Monoclonal
Immunogen:	A synthetic peptide of human alpha smooth muscle Actin
Formulation:	50mM Tris-Glycine(pH 7.4), 0.15M NaCl, 40% Glycerol, 0.01% Sodium azide and 0.05% BSA
Concentration:	lot specific
Purification:	Affinity Purified
Conjugation:	Unconjugated
Storage:	Store at 4°C short term. Aliquot and store at -20°C long term. Avoid freeze/thaw cycles.
Stability:	1 year
Predicted Protein Size:	Calculated MW: 42 kDa; Observed MW: 42 kDa
Gene Name:	actin, alpha 2, smooth muscle, aorta
Database Link:	<a href="#">Entrez Gene 59 Human P62736</a>
Background:	Swiss-Prot Acc.P62736.Actins are highly conserved proteins that are involved in various types of cell motility and are ubiquitously expressed in all eukaryotic cells.MiscellaneousIn vertebrates 3 main groups of actin isoforms, alpha, beta and gamma have been identified. The alpha actins are found in muscle tissues and are a major constituent of the contractile apparatus. The beta and gamma actins coexist in most cell types as components of the cytoskeleton and as mediators of internal cell motility.
Synonyms:	AAT6; ACTSA; ACTVS; Alpha-actin-2

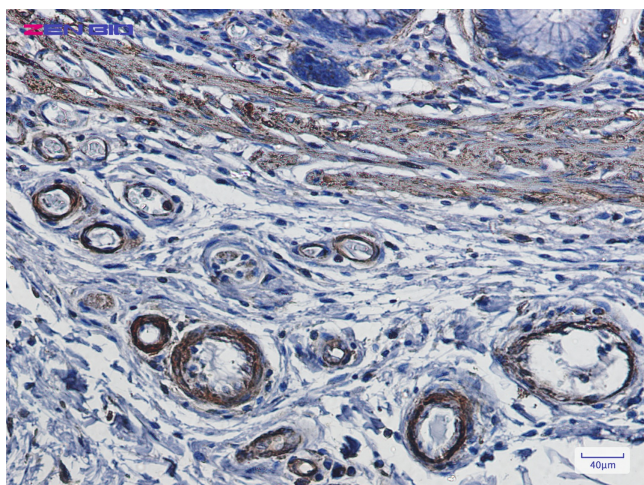


[View online »](#)

Product images:



Western blot analysis of alpha smooth muscle Actin in rat Brain, C6, 3T3, HeLa lysates using alpha Smooth Muscle Actin antibody.



Immunohistochemistry of alpha smooth muscle Actin in paraffin-embedded Human colon cancer tissue using alpha smooth muscle Actin Rabbit mAb at dilution 1/100