

## Product datasheet for **TA383663**

### Actin (ACTA1) Rabbit Monoclonal Antibody [Clone ID: R07-8G7]

#### Product data:

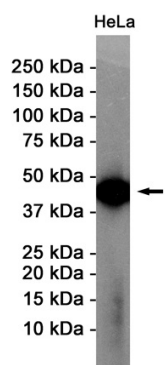
Product Type:	Primary Antibodies
Clone Name:	R07-8G7
Applications:	IHC, IP, WB
Recommended Dilution:	WB: 1/1000 IHC: 1/50 IP: 1/20
Reactivity:	Human
Host:	Rabbit
Isotype:	IgG
Clonality:	Monoclonal
Immunogen:	A synthetic peptide of human Actin
Formulation:	50mM Tris-Glycine(pH 7.4), 0.15M NaCl, 40% Glycerol, 0.01% Sodium azide and 0.05% BSA
Concentration:	lot specific
Purification:	Affinity Purified
Conjugation:	Unconjugated
Storage:	Store at 4°C short term. Aliquot and store at -20°C long term. Avoid freeze/thaw cycles.
Stability:	1 year
Predicted Protein Size:	Calculated MW: 42 kDa; Observed MW: 42 kDa
Gene Name:	actin, alpha 1, skeletal muscle
Database Link:	<a href="#">Entrez Gene 58 Human P68133</a>
Background:	Swiss-Prot Acc.P68133.Actins are highly conserved proteins that are involved in various types of cell motility and are ubiquitously expressed in all eukaryotic cells.MiscellaneousIn vertebrates 3 main groups of actin isoforms, alpha, beta and gamma have been identified. The alpha actins are found in muscle tissues and are a major constituent of the contractile apparatus. The beta and gamma actins coexist in most cell types as components of the cytoskeleton and as mediators of internal cell motility.



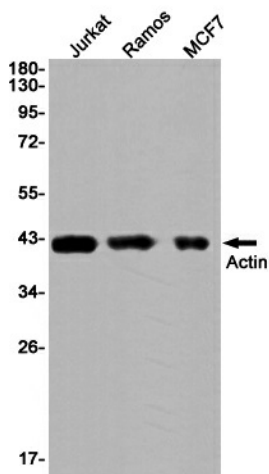
[View online »](#)

Synonyms: ACTA; Alpha-actin-1; ASMA; CFTD; CFTD1; CFTDM; MPFD; NEM1; NEM2; NEM3

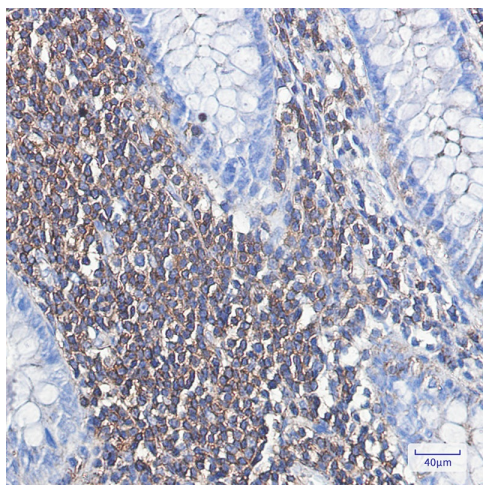
**Product images:**



Western blot analysis of Actin in HeLa lysates using alpha Skeletal Muscle Actin antibody.



Western blot analysis of Actin in Jurkat, Ramos, MCF-7 lysates using Actin antibody.



Immunohistochemistry analysis of paraffin-embedded Human colon cancer using Actin antibody. High-pressure and temperature Sodium Citrate pH 6.0 was used for antigen retrieval.