

## Product datasheet for **TA383661**

### Acetyl CoA synthetase (ACSS2) Rabbit Polyclonal Antibody

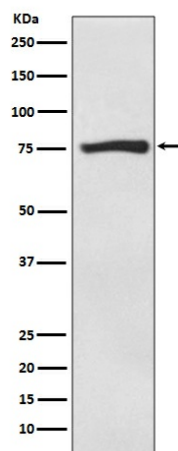
#### Product data:

Product Type:	Primary Antibodies
Applications:	IF, WB
Recommended Dilution:	WB: 1/500-1/2000 ICC/IF: 1/50-1/200
Reactivity:	Human, Mouse, Rat
Host:	Rabbit
Isotype:	IgG
Clonality:	Polyclonal
Immunogen:	A synthesized peptide derived from human ACSS2
Formulation:	Rabbit IgG in phosphate buffered saline , pH 7.4, 150mM NaCl, 0.02% sodium azide and 50% glycerol.
Concentration:	lot specific
Purification:	Affinity Chromatography
Conjugation:	Unconjugated
Storage:	Store at 4°C short term. Aliquot and store at -20°C long term. Avoid freeze/thaw cycles.
Stability:	1 year
Predicted Protein Size:	79kDa
Gene Name:	acyl-CoA synthetase short-chain family member 2
Database Link:	<a href="#">Entrez Gene 55902 Human Q9NR19</a>
Background:	Swiss-Prot Acc.Q9NR19.Activates acetate so that it can be used for lipid synthesis or for energy generation. Cytoplasmic acetyl-CoA synthetase (AceCS1) catalyzes the conversion of acetate and CoA to acetyl-CoA. Acetyl-CoA synthesized by AceCS1 is used for fatty acid and lipid biosynthesis. Studies suggest that this enzyme is regulated by sterol regulatory element-binding proteins.
Synonyms:	ACAS2; ACECS; ACS; ACSA; dj1161H23.1; DKFZp762G026



[View online »](#)

## Product images:



Western blot analysis of ACSS2 in HepG2 lysates using ACSS2 antibody.