

## Product datasheet for **TA383660**

### **FACL4 (ACSL4) Rabbit Monoclonal Antibody [Clone ID: R07-4E3]**

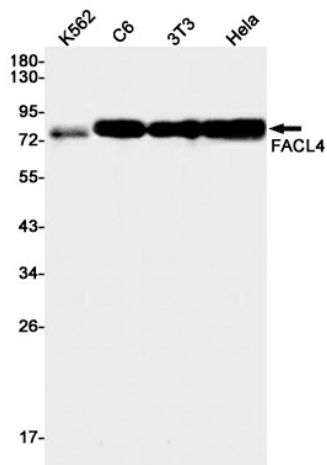
#### **Product data:**

<b>Product Type:</b>	Primary Antibodies
<b>Clone Name:</b>	R07-4E3
<b>Applications:</b>	IHC, IP, WB
<b>Recommended Dilution:</b>	WB: 1/1000 IHC: 1/50 IP: 1/20
<b>Reactivity:</b>	Human, Mouse, Rat
<b>Host:</b>	Rabbit
<b>Isotype:</b>	IgG
<b>Clonality:</b>	Monoclonal
<b>Immunogen:</b>	A synthetic peptide of human FACL4
<b>Formulation:</b>	50mM Tris-Glycine(pH 7.4), 0.15M NaCl, 40% Glycerol, 0.01% Sodium azide and 0.05% BSA
<b>Concentration:</b>	lot specific
<b>Purification:</b>	Affinity Purified
<b>Conjugation:</b>	Unconjugated
<b>Storage:</b>	Store at 4°C short term. Aliquot and store at -20°C long term. Avoid freeze/thaw cycles.
<b>Stability:</b>	1 year
<b>Predicted Protein Size:</b>	Calculated MW: 79 kDa; Observed MW: 79 kDa
<b>Gene Name:</b>	acyl-CoA synthetase long-chain family member 4
<b>Database Link:</b>	<a href="#">Entrez Gene 2182 Human O60488</a>
<b>Background:</b>	Swiss-Prot Acc.O60488.Activation of long-chain fatty acids for both synthesis of cellular lipids, and degradation via beta-oxidation. Preferentially uses arachidonate and eicosapentaenoate as substrates.
<b>Synonyms:</b>	ACS4; FACL4; LACS4; MRX63; MRX68

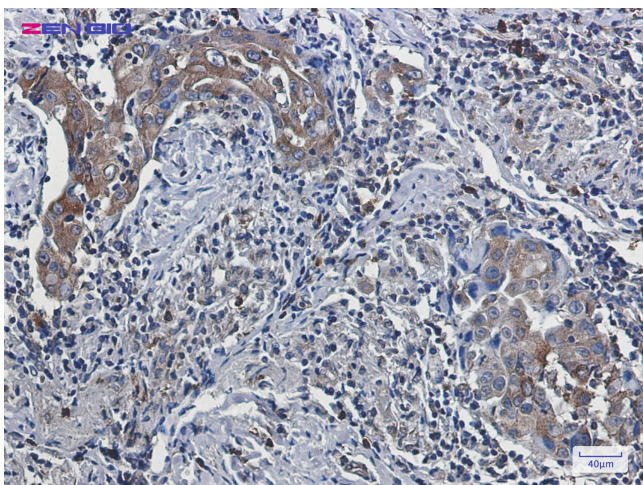


[View online »](#)

## Product images:



Western blot analysis of FACL4 in K562, C6, 3T3, HeLa lysates using FACL4 antibody.



Immunohistochemistry of FACL4 in paraffin-embedded Human lung cancer tissue using FACL4 Rabbit mAb at dilution 1/50