

Product datasheet for **TA383659**

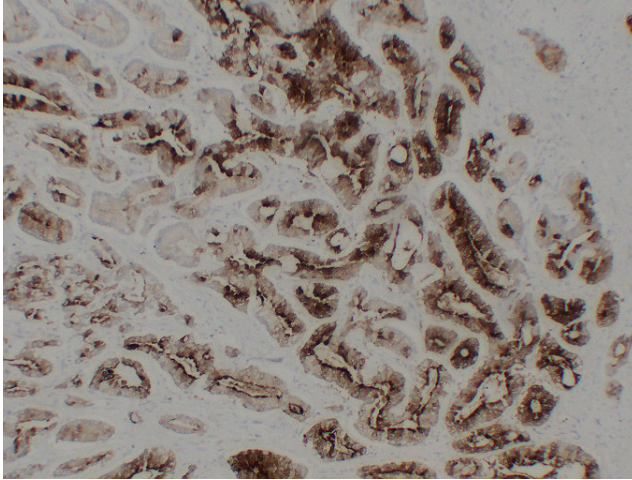
Prostatic Acid Phosphatase (ACPP) Mouse Monoclonal Antibody [Clone ID: 6E2-2D2-5F4]

Product data:

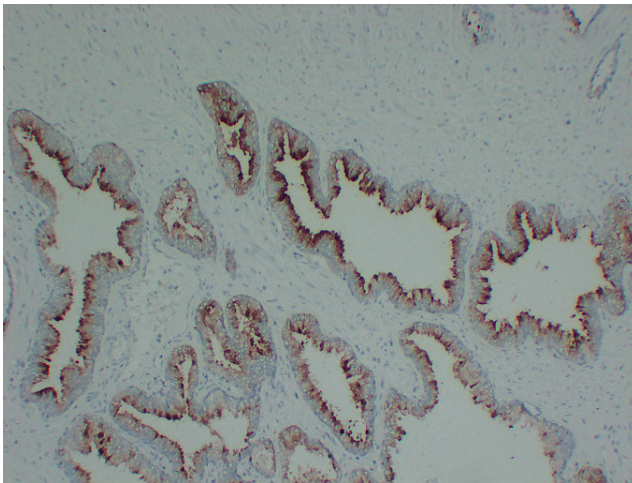
Product Type:	Primary Antibodies
Clone Name:	6E2-2D2-5F4
Applications:	IHC
Recommended Dilution:	IHC-p: 1/100-1/500
Reactivity:	Human
Host:	Mouse
Isotype:	IgG1, kappa
Clonality:	Monoclonal
Immunogen:	Synthesized peptide derived from human Prostatic Acid Phosphatase(PSAP)
Formulation:	Liquid in PBS containing 50% glycerol, 0.5% BSA and 0.02% sodium azide, pH 7.3.
Concentration:	lot specific
Purification:	Affinity Chromatography
Conjugation:	Unconjugated
Storage:	Store at 4°C short term. Aliquot and store at -20°C long term. Avoid freeze/thaw cycles.
Stability:	1 year
Gene Name:	acid phosphatase, prostate
Database Link:	Entrez Gene 55 Human P15309
Background:	Swiss-Prot Acc.P15309.
Synonyms:	ACP-3; ACP3; PAP



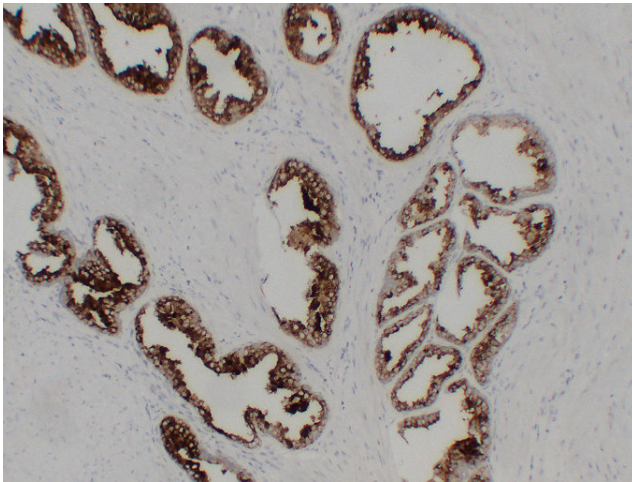
[View online »](#)

Product images:

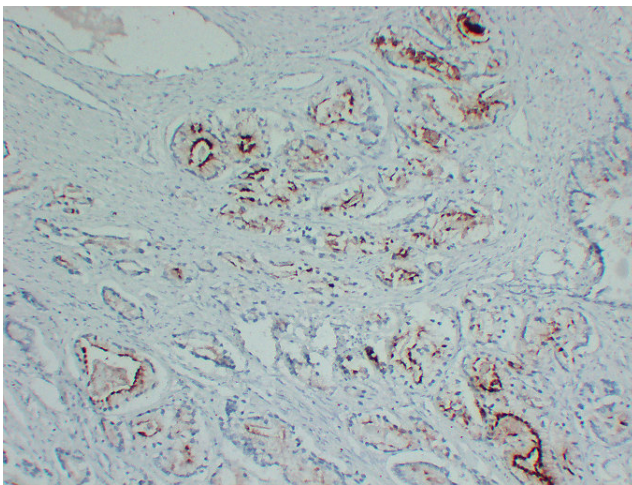
Immunohistochemical analysis of paraffin-embedded human Prostate. 1, Prostatic Acid Phosphatase (PSAP) Antibody was diluted at 1:200 (4°, overnight). 2, EDTA pH 8.0 was used for antigen retrieval



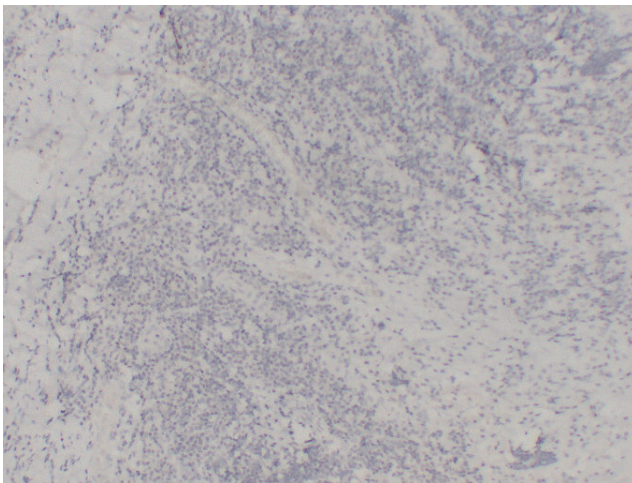
Immunohistochemical analysis of paraffin-embedded human Prostate. 1, Prostatic Acid Phosphatase (PSAP) Antibody was diluted at 1:200 (4°, overnight). 2, EDTA pH 8.0 was used for antigen retrieval



Immunohistochemical analysis of paraffin-embedded human Prostate. 1, Prostatic Acid Phosphatase (PSAP) Antibody was diluted at 1:200 (4°, overnight). 2, EDTA pH 8.0 was used for antigen retrieval



Immunohistochemical analysis of paraffin-embedded human Prostatic carcinoma. 1, Prostatic Acid Phosphatase (PSAP) Antibody was diluted at 1:200 (4°, overnight). 2, EDTA pH 8.0 was used for antigen retrieval



Immunohistochemical analysis of paraffin-embedded human Tonsil. 1, Prostatic Acid Phosphatase (PSAP) Antibody was diluted at 1:200 (4°, overnight). 2, EDTA pH 8.0 was used for antigen retrieval