

Product datasheet for **TA383655S**

ATP citrate lyase (ACLY) Rabbit Monoclonal Antibody [Clone ID: R02-9B5]

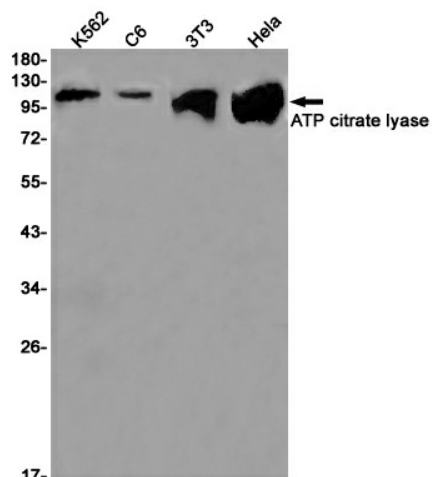
Product data:

Product Type:	Primary Antibodies
Clone Name:	R02-9B5
Applications:	IF, IP, WB
Recommended Dilution:	WB: 1/1000 ICC/IF: 1/100 IP: 1/20
Reactivity:	Human, Mouse, Rat
Host:	Rabbit
Isotype:	IgG
Clonality:	Monoclonal
Immunogen:	A synthetic peptide of human ATP citrate lyase
Formulation:	50mM Tris-Glycine(pH 7.4), 0.15M NaCl, 40% Glycerol, 0.01% Sodium azide and 0.05% BSA
Concentration:	lot specific
Purification:	Affinity Purified
Conjugation:	Unconjugated
Storage:	Store at 4°C short term. Aliquot and store at -20°C long term. Avoid freeze/thaw cycles.
Stability:	1 year
Predicted Protein Size:	Calculated MW: 121 kDa; Observed MW: 121 kDa
Gene Name:	ATP citrate lyase
Database Link:	Entrez Gene 47 Human P53396
Background:	Swiss-Prot Acc.P53396.ATP-citrate synthase is the primary enzyme responsible for the synthesis of cytosolic acetyl-CoA in many tissues. Has a central role in de novo lipid synthesis. In nervous tissue it may be involved in the biosynthesis of acetylcholine.
Synonyms:	ACL; ATPCL; CLATP; OTTHUMP00000164773

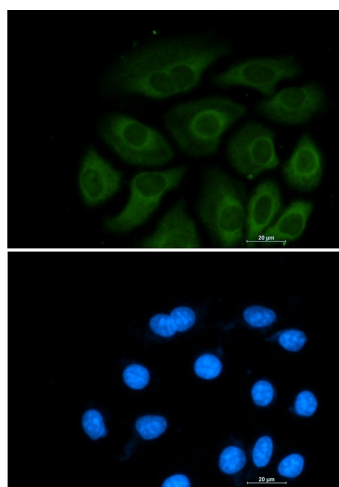


[View online »](#)

Product images:



Western blot analysis of ATP citrate lyase in K562, C6, 3T3, HeLa lysates using ATP citrate lyase antibody.



Immunocytochemistry analysis of ATP Citrate lyase (green) in A549 using ATP Citrate lyase antibody, and DAPI (blue).