

## Product datasheet for **TA383654**

### ATP citrate lyase (ACLY) Rabbit Polyclonal Antibody

#### Product data:

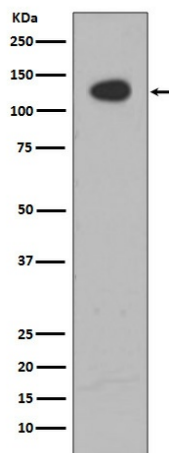
Product Type:	Primary Antibodies
Applications:	FC, IF, IHC, IP, WB
Recommended Dilution:	WB: 1/500-1/2000 IHC: 1/50-1/200 ICC/IF: 1/50-1/200 IP: 1/50
Reactivity:	Human, Mouse, Rat
Host:	Rabbit
Isotype:	IgG
Clonality:	Polyclonal
Immunogen:	A synthesized peptide derived from human ATP citrate lyase
Formulation:	Rabbit IgG in phosphate buffered saline , pH 7.4, 150mM NaCl, 0.02% sodium azide and 50% glycerol.
Concentration:	lot specific
Purification:	Affinity Chromatography
Conjugation:	Unconjugated
Storage:	Store at 4°C short term. Aliquot and store at -20°C long term. Avoid freeze/thaw cycles.
Stability:	1 year
Predicted Protein Size:	122kDa
Gene Name:	ATP citrate lyase
Database Link:	<a href="#">Entrez Gene 47 Human P53396</a>
Background:	Swiss-Prot Acc.P53396.ATP citrate lyase is the primary enzyme responsible for the synthesis of cytosolic acetyl-CoA in many tissues. The enzyme is a tetramer (relative molecular weight approximately 440,000) of apparently identical subunits. It catalyzes the formation of acetyl-CoA and oxaloacetate from citrate and CoA with a concomitant hydrolysis of ATP to ADP and phosphate. The product, acetyl-CoA, serves several important biosynthetic pathways, including lipogenesis and cholesterologenesis.



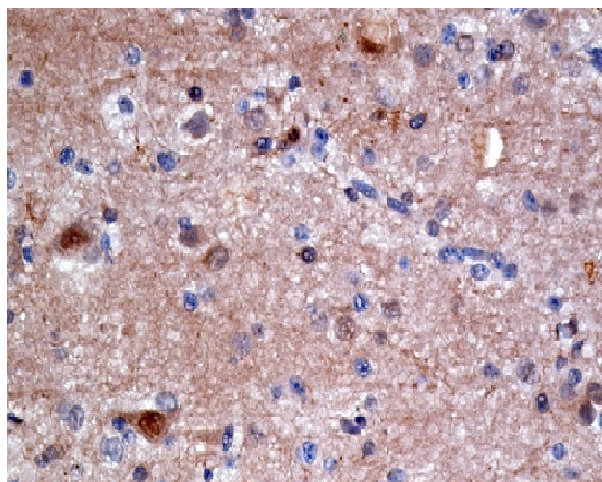
[View online »](#)

Synonyms: ACL; ATPCL; CLATP; OTTHUMP00000164773

### Product images:



Western blot analysis of ATP citrate lyase in HeLa lysates using ATP Citrate lyase antibody.



Immunohistochemistry analysis of paraffin-embedded Human brain carcinoma using ATP citrate lyase antibody. High-pressure and temperature Sodium Citrate pH 6.0 was used for antigen retrieval.