

Product datasheet for **TA383652**

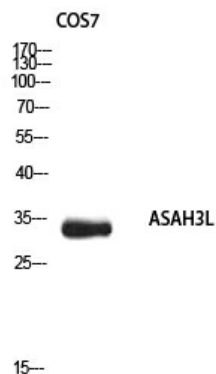
ACER2 Rabbit Polyclonal Antibody

Product data:

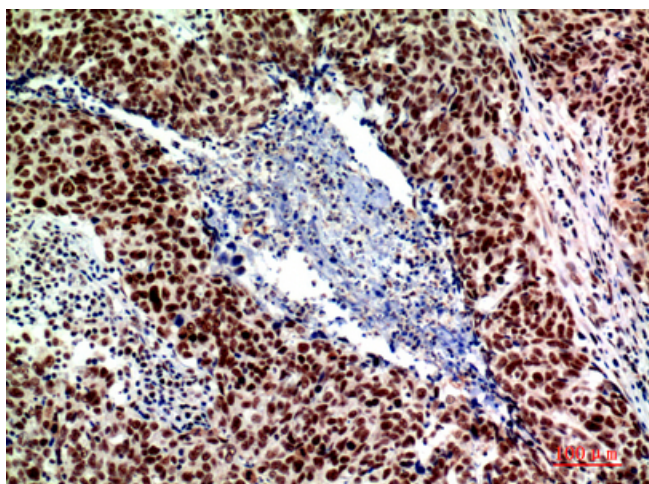
Product Type:	Primary Antibodies
Applications:	ELISA, IHC, WB
Recommended Dilution:	WB: 1/500-1/2000 IHC-p: 1/100-1/300 ELISA: 1/10000
Reactivity:	Human, Mouse
Host:	Rabbit
Isotype:	IgG
Clonality:	Polyclonal
Immunogen:	Synthesized peptide derived from ASAH3L . at AA range: 50-130
Formulation:	Liquid in PBS containing 50% glycerol, 0.5% BSA and 0.02% sodium azide, pH 7.3.
Concentration:	lot specific
Purification:	Affinity Purified
Conjugation:	Unconjugated
Storage:	Store at 4°C short term. Aliquot and store at -20°C long term. Avoid freeze/thaw cycles.
Stability:	1 year
Predicted Protein Size:	Observed MW (kDa):33
Database Link:	Q5QJU3
Background:	Swiss-Prot Acc.Q5QJU3.



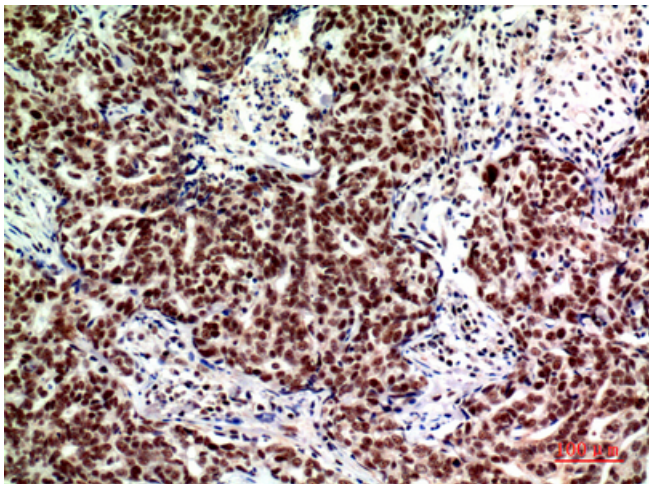
[View online »](#)

Product images:

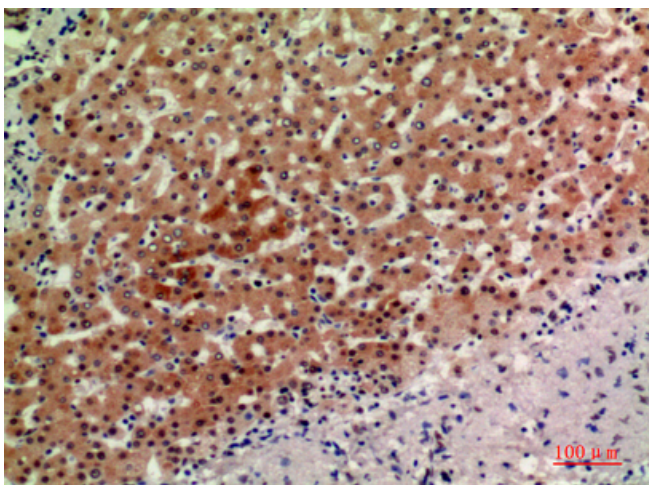
Western blot analysis of ASA3L in COS7 lysates using ASA3L antibody.



Immunohistochemistry analysis of paraffin-embedded Human breast cancer using ASA3L antibody. High-pressure and temperature Sodium Citrate pH 6.0 was used for antigen retrieval.



Immunohistochemistry analysis of paraffin-embedded Human breast cancer using ASAH3L antibody. High-pressure and temperature Sodium Citrate pH 6.0 was used for antigen retrieval.



Immunohistochemistry analysis of paraffin-embedded Human liver using ASAH3L antibody. High-pressure and temperature Sodium Citrate pH 6.0 was used for antigen retrieval.