

Product datasheet for **TA383648**

ABCG2 Rabbit Polyclonal Antibody

Product data:

| | |
|-------------------------|---|
| Product Type: | Primary Antibodies |
| Applications: | ELISA, IHC, WB |
| Recommended Dilution: | WB: 1/500-1/2000 IHC: 1/100-1/300 ELISA: 1/10000 |
| Reactivity: | Human |
| Host: | Rabbit |
| Isotype: | IgG |
| Clonality: | Polyclonal |
| Immunogen: | The antiserum was produced against synthesized peptide derived from human ABCG2. AA range:289-338 |
| Formulation: | Liquid in PBS containing 50% glycerol, 0.5% BSA and 0.02% sodium azide, pH 7.3. |
| Concentration: | lot specific |
| Purification: | Affinity Chromatography |
| Conjugation: | Unconjugated |
| Storage: | Store at 4°C short term. Aliquot and store at -20°C long term. Avoid freeze/thaw cycles. |
| Stability: | 1 year |
| Predicted Protein Size: | Observed MW (kDa):72 |
| Gene Name: | ATP binding cassette subfamily G member 2 (Junior blood group) |
| Database Link: | Entrez Gene 9429 Human Q9UNQ0 |



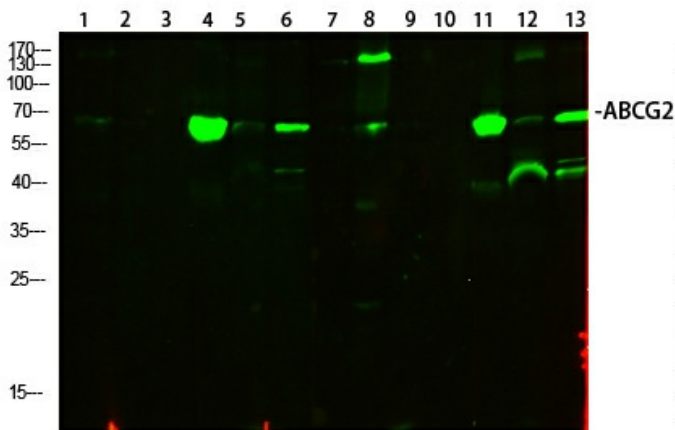
[View online »](#)

Background:

Swiss-Prot Acc.Q9UNQ0.High-capacity urate exporter functioning in both renal and extrarenal urate excretion. Plays a role in porphyrin homeostasis as it is able to mediate the export of protoporphyrin IX (PPIX) both from mitochondria to cytosol and from cytosol to extracellular space, and cellular export of heme, and heme. Xenobiotic transporter that may play an important role in the exclusion of xenobiotics from the brain. Appears to play a major role in the multidrug resistance phenotype of several cancer cell lines. Implicated in the efflux of numerous drugs and xenobiotics: mitoxantrone, the photosensitizer pheophorbide, camptothecin, methotrexate, azidothymidine (AZT), and the anthracyclines daunorubicin and doxorubicin.

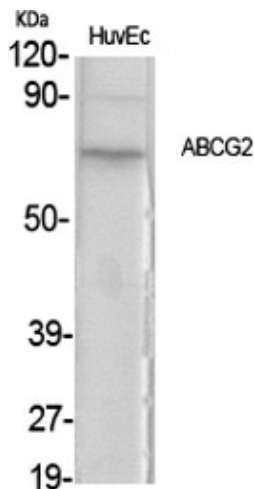
Synonyms:

ABC15; ABCP; BCRP; BCRP1; BMDP; CD338; CDw338; EST157481; MGC102821; MRX; MXR; MXR1

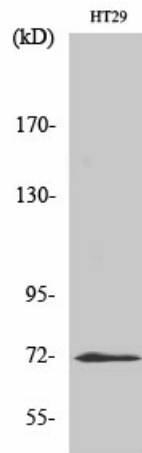
Product images:


| | |
|----|--------------|
| 1 | 293T |
| 2 | mouse-kidney |
| 3 | mouse-heart |
| 4 | mouse-liver |
| 5 | mouse-brain |
| 6 | mouse-lung |
| 7 | Hela |
| 8 | RAT-brain |
| 9 | RAT-lung |
| 10 | RAT-heart |
| 11 | A549 |
| 12 | VEC |
| 13 | HEPG2 |

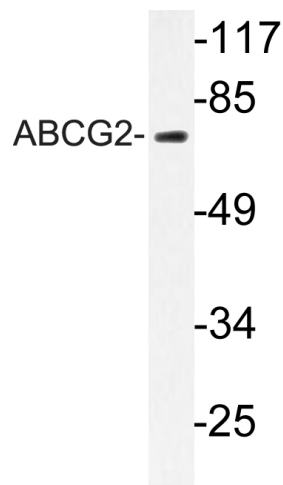
Western blot analysis of ABCG2 in various lysates using ABCG2 antibody.



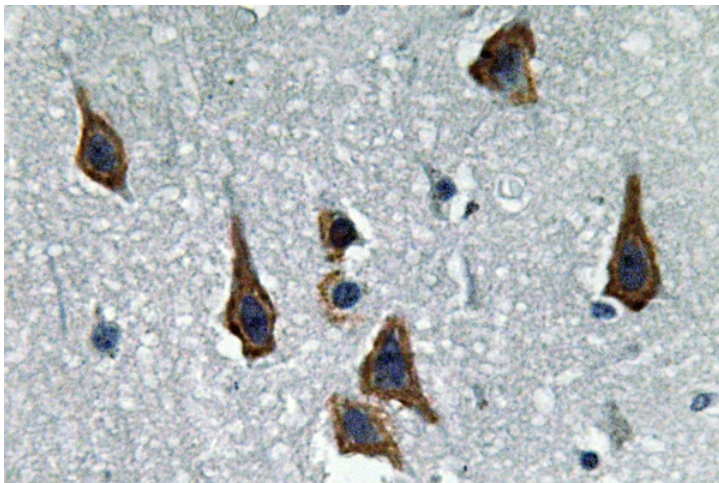
Western blot analysis of ABCG2 in various lysates using ABCG2 antibody.



Western blot analysis of ABCG2 in HT-29 lysates using ABCG2 antibody



Western blot analysis of ABCG2 in HT-29 lysates using ABCG2 antibody.



Immunohistochemistry analysis of paraffin-embedded Human brain using ABCG2 antibody. High-pressure and temperature Sodium Citrate pH 6.0 was used for antigen retrieval. Sample with blocking peptide on the right.