

Product datasheet for **TA383646S**

ABCB5 Mouse Monoclonal Antibody [Clone ID: 8D2-2B8-4E8]

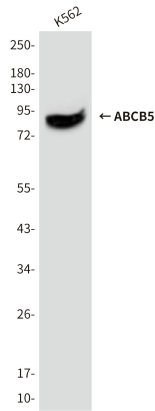
Product data:

Product Type:	Primary Antibodies
Clone Name:	8D2-2B8-4E8
Applications:	IF, WB
Recommended Dilution:	WB: 1/2000 ICC: 1/200
Reactivity:	Human
Host:	Mouse
Isotype:	IgG1
Clonality:	Monoclonal
Immunogen:	Synthetic Peptide of ABCB5
Formulation:	Liquid in PBS containing 50% glycerol, 0.5% BSA and 0.03% Proclin 300, pH 7.3.
Concentration:	lot specific
Purification:	Affinity Purified
Conjugation:	Unconjugated
Storage:	Store at 4°C short term. Aliquot and store at -20°C long term. Avoid freeze/thaw cycles.
Stability:	1 year
Predicted Protein Size:	Observed MW (kDa):90
Gene Name:	ATP binding cassette subfamily B member 5
Database Link:	Entrez Gene 340273 Human Q2M3G0
Background:	Swiss-Prot Acc.Q2M3G0.Drug efflux transporter present in a number of stem cells that acts as a regulator of cellular differentiation. Able to mediate efflux from cells of the rhodamine dye and of the therapeutic drug doxorubicin. Specifically present in limbal stem cells, where it plays a key role in corneal development and repair.
Synonyms:	ABCB5alpha; ABCB5beta; EST422562

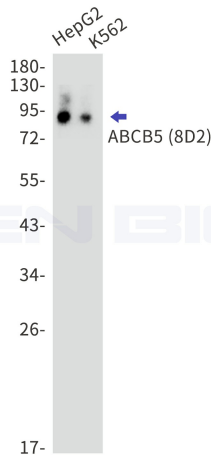


[View online »](#)

Product images:



Western blot analysis of ABCB5 in K562 lysates using ABCB5 antibody.



Western blot detection of ABCB5 (8D2) in HepG2, K562 cell lysates using ABCB5 (8D2) antibody. Observed band size: 90kDa.