

Product datasheet for **TA383643S**

A1BG Rabbit Polyclonal Antibody

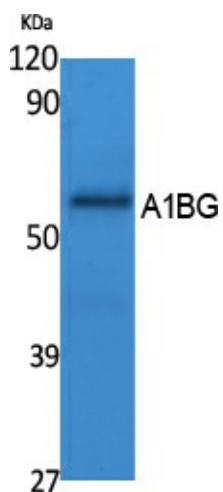
Product data:

Product Type:	Primary Antibodies
Applications:	ELISA, IHC, WB
Recommended Dilution:	WB: 1/500-1/2000 IHC-p: 1/100-300 ELISA: 1/40000
Reactivity:	Human
Host:	Rabbit
Isotype:	IgG
Clonality:	Polyclonal
Immunogen:	Synthesized peptide derived from A1BG . at AA range: 100-180
Formulation:	Liquid in PBS containing 50% glycerol, 0.5% BSA and 0.02% sodium azide, pH 7.3.
Concentration:	lot specific
Purification:	Affinity Purified
Conjugation:	Unconjugated
Storage:	Store at 4°C short term. Aliquot and store at -20°C long term. Avoid freeze/thaw cycles.
Stability:	1 year
Predicted Protein Size:	Observed MW (kDa):28
Gene Name:	alpha-1-B glycoprotein
Database Link:	Entrez Gene 1 Human P04217
Background:	Swiss-Prot Acc.P04217.
Synonyms:	A1B; ABG; DKFZp686F0970; GAB; HYST2477

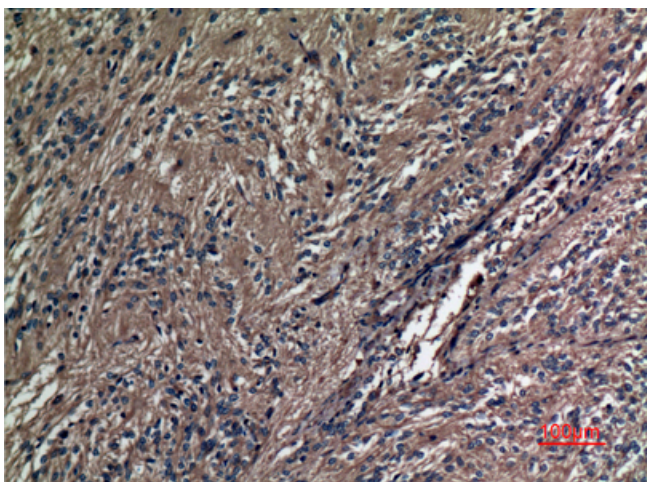


[View online »](#)

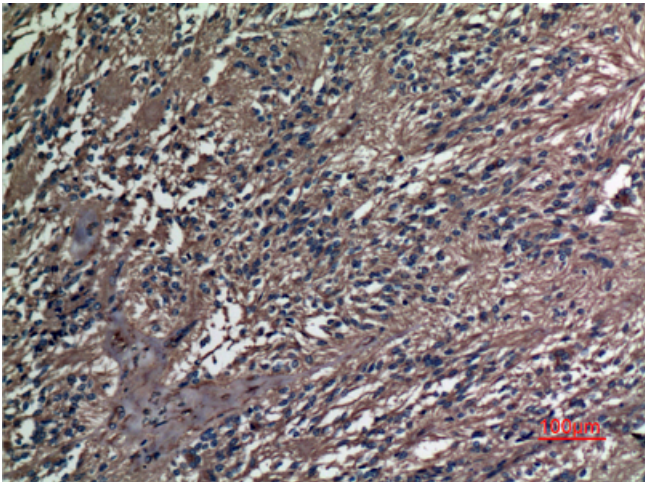
Product images:



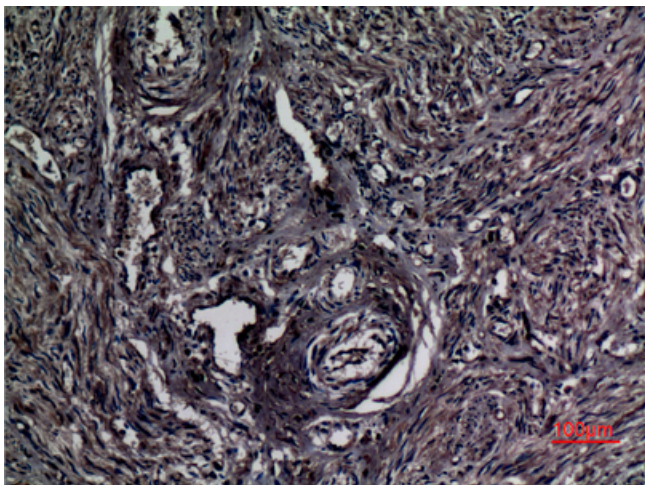
Western blot analysis of A1BG in K562 lysates using A1BG antibody.



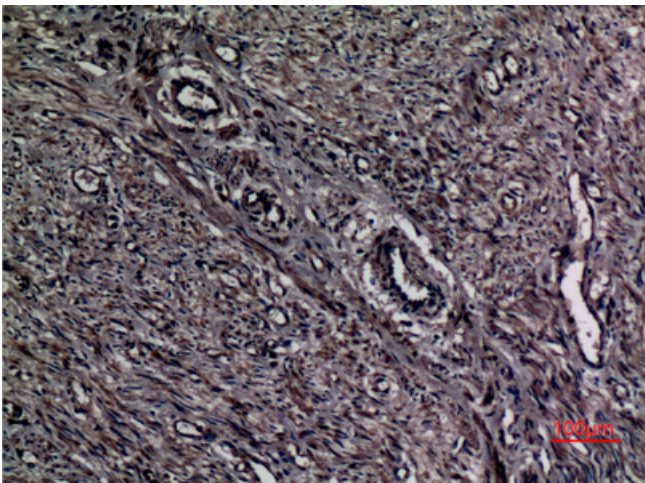
Immunohistochemistry analysis of paraffin-embedded Human ovary using A1BG antibody. High-pressure and temperature Sodium Citrate pH 6.0 was used for antigen retrieval.



Immunohistochemistry analysis of paraffin-embedded Human ovary using A1BG antibody. High-pressure and temperature Sodium Citrate pH 6.0 was used for antigen retrieval.



Immunohistochemistry analysis of paraffin-embedded Human uterus using A1BG antibody. High-pressure and temperature Sodium Citrate pH 6.0 was used for antigen retrieval.



Immunohistochemistry analysis of paraffin-embedded Human uterus using A1BG antibody. High-pressure and temperature Sodium Citrate pH 6.0 was used for antigen retrieval.