

## Product datasheet for **TA383629S**

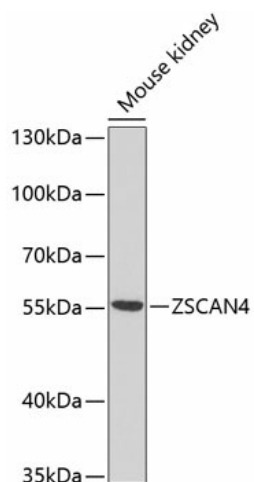
### Zscan4c Rabbit Polyclonal Antibody

#### Product data:

Product Type:	Primary Antibodies
Applications:	ELISA, WB
Recommended Dilution:	WB, 1:500 - 1:2000 ELISA, Recommended starting concentration is 1 µg/mL. Please optimize the concentration based on your specific assay requirements.
Reactivity:	Mouse
Modifications:	Unmodified
Host:	Rabbit
Isotype:	IgG
Clonality:	Polyclonal
Formulation:	Buffer: PBS with 0.02% sodium azide, 50% glycerol, pH 7.3.
Concentration:	lot specific
Purification:	Affinity purification
Conjugation:	Unconjugated
Storage:	Store at -20°C. Avoid freeze / thaw cycles.
Stability:	Shelf life: one year from despatch.
Predicted Protein Size:	57kDa
Gene Name:	zinc finger and SCAN domain containing 4C
Database Link:	<a href="#">Entrez Gene 245109 Mouse</a> <a href="#">Q80VJ6</a>
Background:	Predicted to enable DNA-binding transcription factor activity, RNA polymerase II-specific and RNA polymerase II cis-regulatory region sequence-specific DNA binding activity. Acts upstream of or within negative regulation of mitotic recombination; regulation of transcription by RNA polymerase II; and telomere maintenance via telomere lengthening. Located in chromosome, telomeric region; cytoplasm; and nucleus. Is expressed in 1-cell stage embryo; 2-cell stage embryo; primary oocyte; and secondary oocyte. Orthologous to human ZSCAN4 (zinc finger and SCAN domain containing 4).
Synonyms:	Gm397; XM_142517; Zscan4d


[View online »](#)

## Product images:



Western blot analysis of lysates from mouse kidney