

## Product datasheet for **TA383627**

### ZFP38 (ZSCAN21) Rabbit Polyclonal Antibody

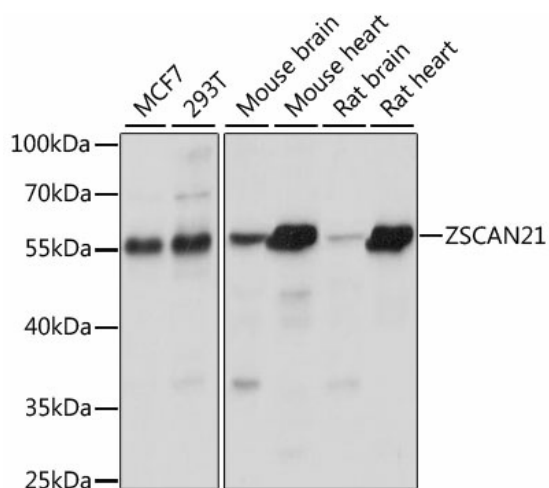
#### Product data:

Product Type:	Primary Antibodies
Applications:	WB
Recommended Dilution:	WB,1:200 - 1:2000
Reactivity:	Human, Mouse, Rat
Modifications:	Unmodified
Host:	Rabbit
Isotype:	IgG
Clonality:	Polyclonal
Immunogen:	Recombinant fusion protein containing a sequence corresponding to amino acids 130-280 of human ZSCAN21 (NP_666019.1).
Formulation:	Buffer: PBS with 0.02% sodium azide,50% glycerol,pH7.3.
Concentration:	lot specific
Purification:	Affinity purification
Conjugation:	Unconjugated
Storage:	Store at -20°C. Avoid freeze / thaw cycles.
Stability:	Shelf life: one year from despatch.
Predicted Protein Size:	53kDa
Gene Name:	zinc finger and SCAN domain containing 21
Database Link:	<a href="#">Entrez Gene 7589 Human Q9Y5A6</a>
Background:	Strong transcriptional activator (By similarity. Plays an important role in spermatogenesis; essential for the progression of meiotic prophase I in spermatocytes (By similarity.
Synonyms:	DKFZp434L134; DKFZp686H10254; NY-REN-21; Zfp-38; ZFP38; Zipro1; ZNF38



[View online »](#)

## Product images:



Western blot analysis of extracts of various cell lines, using ZSCAN21 antibody (TA383627) at 1:1000 dilution. | Secondary antibody: HRP Goat Anti-Rabbit IgG (H+L) at 1:10000 dilution. | Lysates/proteins: 25ug per lane. | Blocking buffer: 3% nonfat dry milk in TBST. | Detection: ECL Basic Kit. | Exposure time: 10s.