

Product datasheet for **TA383618**

ZP2 Rabbit Polyclonal Antibody

Product data:

Product Type:	Primary Antibodies
Applications:	ICC/IF, WB
Recommended Dilution:	WB,1:1000 - 1:4000 IF,1:50 - 1:200
Reactivity:	Human, Mouse, Rat
Modifications:	Unmodified
Host:	Rabbit
Isotype:	IgG
Clonality:	Polyclonal
Immunogen:	Recombinant fusion protein containing a sequence corresponding to amino acids 651-745 of human ZP2 (NP_003451.1).
Formulation:	Buffer: PBS with 0.02% sodium azide,50% glycerol,pH7.3.
Concentration:	lot specific
Purification:	Affinity purification
Conjugation:	Unconjugated
Storage:	Store at -20°C. Avoid freeze / thaw cycles.
Stability:	Shelf life: one year from despatch.
Predicted Protein Size:	81kDa/82kDa
Gene Name:	zona pellucida glycoprotein 2
Database Link:	Entrez Gene 7783 Human Q05996

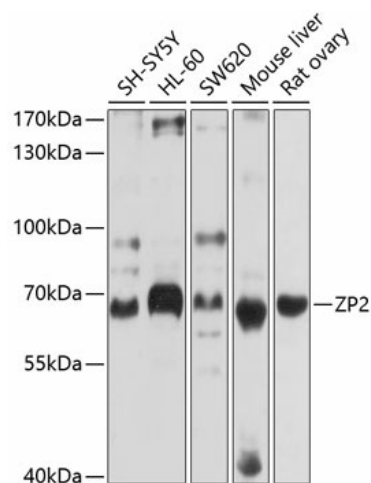
Background: The zona pellucida is an extracellular matrix that surrounds the oocyte and early embryo. It is composed of three glycoproteins with various functions during fertilization and preimplantation development. The glycosylated mature peptide is one of the structural components of the zona pellucida and functions in secondary binding and penetration of acrosome-reacted spermatozoa. Female mice lacking this gene do not form a stable zona matrix and are sterile. Alternative splicing results in multiple transcript variants.



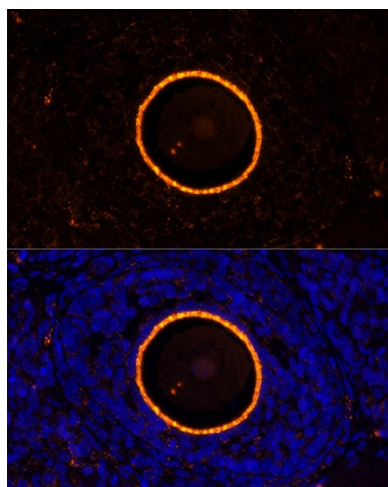
[View online »](#)

Synonyms: ZPA

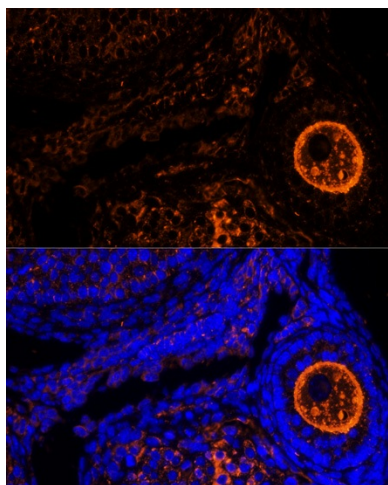
Product images:



Western blot analysis of extracts of various cell lines, using ZP2 antibody (TA383618) at 1:1000 dilution. | Secondary antibody: HRP Goat Anti-Rabbit IgG (H+L) at 1:10000 dilution. | Lysates/proteins: 25ug per lane. | Blocking buffer: 3% nonfat dry milk in TBST. | Detection: ECL Basic Kit . | Exposure time: 10s.



Immunofluorescence analysis of rat oophoroma cells using ZP2 antibody (TA383618) at dilution of 1:100. Blue: DAPI for nuclear staining.



Immunofluorescence analysis of mouse oophoroma cells using ZP2 antibody (TA383618) at dilution of 1:100. Blue: DAPI for nuclear staining.