

## Product datasheet for **TA383605**

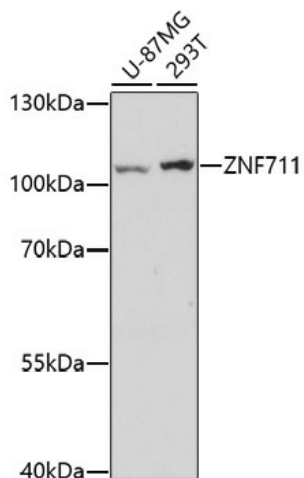
### **ZNF711 Rabbit Polyclonal Antibody**

#### **Product data:**

Product Type:	Primary Antibodies
Applications:	ELISA, WB
Recommended Dilution:	WB, 1:500 - 1:2000 ELISA, Recommended starting concentration is 1 µg/mL. Please optimize the concentration based on your specific assay requirements.
Reactivity:	Human
Host:	Rabbit
Isotype:	IgG
Clonality:	Polyclonal
Formulation:	Buffer: PBS with 0.01% thimerosal, 50% glycerol, pH7.3.
Concentration:	lot specific
Purification:	Affinity purification
Conjugation:	Unconjugated
Storage:	Store at -20°C. Avoid freeze / thaw cycles.
Stability:	Shelf life: one year from despatch.
Predicted Protein Size:	86kDa
Gene Name:	zinc finger protein 711
Database Link:	<a href="#">Entrez Gene 7552 Human Q9Y462</a>
Background:	This gene encodes a zinc finger protein of unknown function. It bears similarity to a zinc finger protein which acts as a transcriptional activator. This gene lies in a region of the X chromosome which has been associated with cognitive disability.
Synonyms:	CMPX1; dj75N13.1; OTTHUMP00000023624; Zfp711; ZNF4; ZNF5; ZNF6



[View online »](#)

**Product images:**

Western blot analysis of various lysates using ZNF711 Rabbit pAb (TA383605) at 1:1000 dilution. Secondary antibody: HRP-conjugated Goat anti-Rabbit IgG (H+L) (AS014) at 1:10000 dilution. Lysates/proteins: 25µg per lane. Blocking buffer: 3% nonfat dry milk in TBST. Detection: ECL Enhanced Kit (RM00021). Exposure time: 3min.