

Product datasheet for **TA383573S**

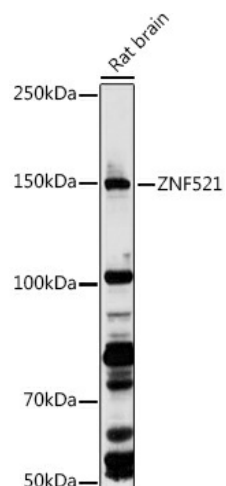
ZNF521 Rabbit Polyclonal Antibody

Product data:

Product Type:	Primary Antibodies
Applications:	ELISA, WB
Recommended Dilution:	WB, 1:500 - 1:1000 ELISA, Recommended starting concentration is 1 µg/mL. Please optimize the concentration based on your specific assay requirements.
Reactivity:	Human, Rat
Modifications:	Unmodified
Host:	Rabbit
Isotype:	IgG
Clonality:	Polyclonal
Formulation:	Buffer: PBS with 0.02% sodium azide, 50% glycerol, pH 7.3.
Concentration:	lot specific
Purification:	Affinity purification
Conjugation:	Unconjugated
Storage:	Store at -20°C. Avoid freeze / thaw cycles.
Stability:	Shelf life: one year from despatch.
Predicted Protein Size:	148kDa
Gene Name:	zinc finger protein 521
Database Link:	Entrez Gene 25925 Human Q96K83
Background:	Enables protein domain specific binding activity. Predicted to be involved in regulation of transcription by RNA polymerase II. Predicted to act upstream of or within neuron fate commitment. Located in nucleus.
Synonyms:	DKFZp564D0764; EHZF; Evi3; LIP3; MGC142182; MGC142208


[View online »](#)

Product images:



Western blot analysis of lysates from Rat brain