

Product datasheet for **TA383566S**

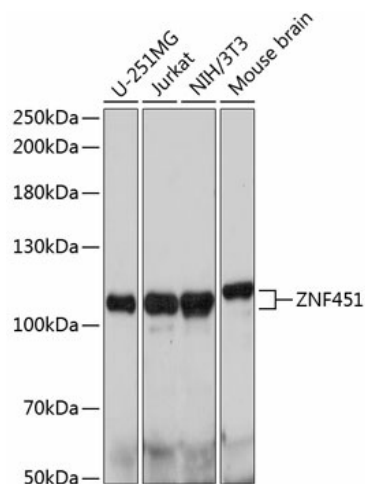
ZNF451 Rabbit Polyclonal Antibody

Product data:

Product Type:	Primary Antibodies
Applications:	ELISA, WB
Recommended Dilution:	WB, 1:200 - 1:2000 ELISA, Recommended starting concentration is 1 µg/mL. Please optimize the concentration based on your specific assay requirements.
Reactivity:	Human, Mouse, Rat
Modifications:	Unmodified
Host:	Rabbit
Isotype:	IgG
Clonality:	Polyclonal
Formulation:	Buffer: PBS with 0.02% sodium azide, 50% glycerol, pH 7.3.
Concentration:	lot specific
Purification:	Affinity purification
Conjugation:	Unconjugated
Storage:	Store at -20°C. Avoid freeze / thaw cycles.
Stability:	Shelf life: one year from despatch.
Predicted Protein Size:	121kDa
Gene Name:	zinc finger protein 451
Database Link:	Entrez Gene 26036 Human Q9Y4E5
Background:	Enables SUMO ligase activity and transcription corepressor activity. Involved in negative regulation of nitrogen compound metabolic process; negative regulation of transforming growth factor beta receptor signaling pathway; and protein sumoylation. Located in nucleus.
Synonyms:	COASTER; dj41711.1; FLJ23421; FLJ53246; FLJ90693; KIAA0576; KIAA1702; MGC26701



[View online »](#)

Product images:


Western blot analysis of various lysates using ZNF451 Rabbit pAb (TA383566S) at 1:1000 dilution.

Secondary antibody: HRP-conjugated Goat anti-Rabbit IgG (H+L) (AS014) at 1:10000 dilution.

Lysates/proteins: 25µg per lane.

Blocking buffer: 3% nonfat dry milk in TBST.

Detection: ECL Basic Kit (RM00020).

Exposure time: 60s.