

Product datasheet for **TA383564S**

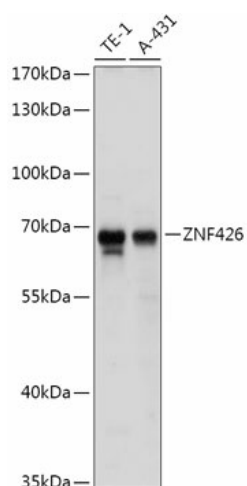
ZNF426 Rabbit Polyclonal Antibody

Product data:

| | |
|-------------------------|---|
| Product Type: | Primary Antibodies |
| Applications: | ELISA, WB |
| Recommended Dilution: | WB, 1:500 - 1:2000 ELISA, Recommended starting concentration is 1 µg/mL. Please optimize the concentration based on your specific assay requirements. |
| Reactivity: | Mouse |
| Modifications: | Unmodified |
| Host: | Rabbit |
| Isotype: | IgG |
| Clonality: | Polyclonal |
| Formulation: | PBS with 0.05% proclin300, 50% glycerol, pH7.3. |
| Concentration: | lot specific |
| Purification: | Affinity purification |
| Conjugation: | Unconjugated |
| Storage: | Store at -20°C. Avoid freeze / thaw cycles. |
| Stability: | Shelf life: one year from despatch. |
| Predicted Protein Size: | 63kDa |
| Gene Name: | zinc finger protein 426 |
| Database Link: | Q9BUY5 |
| Background: | Kaposi's sarcoma-associated herpesvirus (KSHV) can be reactivated from latency by the viral protein RTA. The protein encoded by this gene is a zinc finger transcriptional repressor that interacts with RTA to modulate RTA-mediated reactivation of KSHV. While the encoded protein can repress KSHV reactivation, RTA can induce degradation of this protein through the ubiquitin-proteasome pathway to overcome the repression. Several transcript variants encoding different isoforms have been found for this gene. |
| Synonyms: | MGC2663 |


[View online »](#)

Product images:



Western blot analysis of lysates from Mouse liver