

Product datasheet for **TA383540S**

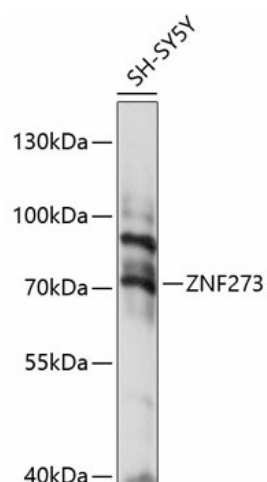
ZNF273 Rabbit Polyclonal Antibody

Product data:

Product Type:	Primary Antibodies
Applications:	ELISA, WB
Recommended Dilution:	WB, 1:100 - 1:500 ELISA, Recommended starting concentration is 1 µg/mL. Please optimize the concentration based on your specific assay requirements.
Reactivity:	Human
Modifications:	Unmodified
Host:	Rabbit
Isotype:	IgG
Clonality:	Polyclonal
Formulation:	PBS with 0.05% proclin300, 50% glycerol, pH7.3.
Concentration:	lot specific
Purification:	Affinity purification
Conjugation:	Unconjugated
Storage:	Store at -20°C. Avoid freeze / thaw cycles.
Stability:	Shelf life: one year from despatch.
Predicted Protein Size:	65kDa
Gene Name:	zinc finger protein 273
Database Link:	Entrez Gene 10793 Human Q14593
Background:	This gene is a member of the krueppel C2H2-type zinc-finger protein family and encodes a protein with 13 C2H2-type zinc fingers and a KRAB domain. This nuclear protein is involved in transcriptional regulation. Alternative splicing results in multiple transcript variants.
Synonyms:	HZF9; MGC12518


[View online »](#)

Product images:



Western blot analysis of various lysates