

Product datasheet for **TA383539S**

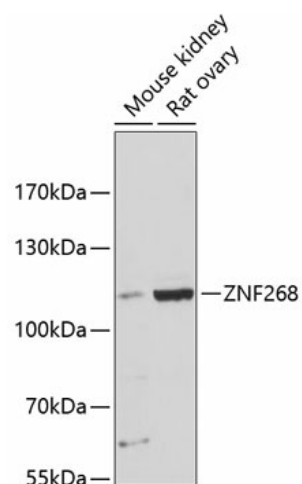
ZNF268 Rabbit Polyclonal Antibody

Product data:

Product Type:	Primary Antibodies
Applications:	ELISA, WB
Recommended Dilution:	WB, 1:500 - 1:1000 ELISA, Recommended starting concentration is 1 µg/mL. Please optimize the concentration based on your specific assay requirements.
Reactivity:	Mouse, Rat, Human
Modifications:	Unmodified
Host:	Rabbit
Isotype:	IgG
Clonality:	Polyclonal
Formulation:	PBS with 0.05% proclin300, 50% glycerol, pH7.3.
Concentration:	lot specific
Purification:	Affinity purification
Conjugation:	Unconjugated
Storage:	Store at -20°C. Avoid freeze / thaw cycles.
Stability:	Shelf life: one year from despatch.
Predicted Protein Size:	108kDa
Gene Name:	zinc finger protein 268
Database Link:	Entrez Gene 10795 Human Q14587
Background:	Predicted to enable DNA-binding transcription activator activity, RNA polymerase II-specific and RNA polymerase II cis-regulatory region sequence-specific DNA binding activity. Involved in several processes, including positive regulation of NIK/NF-kappaB signaling; positive regulation of nitrogen compound metabolic process; and regulation of apoptotic process. Located in actin cytoskeleton; cytosol; and nucleus.
Synonyms:	HZF3; MGC126498


[View online »](#)

Product images:



Western blot analysis of various lysates