

## Product datasheet for **TA383524S**

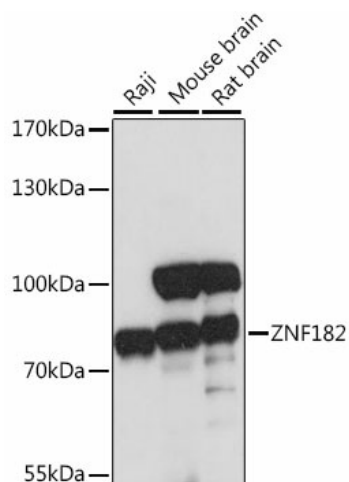
### ZNF182 Rabbit Polyclonal Antibody

#### Product data:

Product Type:	Primary Antibodies
Applications:	ELISA, WB
Recommended Dilution:	WB, 1:500 - 1:2000 ELISA, Recommended starting concentration is 1 µg/mL. Please optimize the concentration based on your specific assay requirements.
Reactivity:	Human, Mouse, Rat
Modifications:	Unmodified
Host:	Rabbit
Isotype:	IgG
Clonality:	Polyclonal
Formulation:	Buffer: PBS with 0.02% sodium azide, 50% glycerol, pH 7.3.
Concentration:	lot specific
Purification:	Affinity purification
Conjugation:	Unconjugated
Storage:	Store at -20°C. Avoid freeze / thaw cycles.
Stability:	Shelf life: one year from despatch.
Predicted Protein Size:	74kDa
Gene Name:	zinc finger protein 182
Database Link:	<a href="#">Entrez Gene 7569 Human P17025</a>
Background:	Zinc-finger proteins bind nucleic acids and play important roles in various cellular functions, including cell proliferation, differentiation, and apoptosis. This gene encodes a zinc finger protein, and belongs to the krueppel C2H2-type zinc-finger protein family. It may be involved in transcriptional regulation. Multiple alternatively spliced transcript variants encoding different isoforms have been identified.
Synonyms:	HHZ150; KOX14; MGC125383; MGC131713; OTTHUMP00000179115; Zfp182; ZNF21; ZNF212; ZNFC150



[View online »](#)

**Product images:**


Western blot analysis of various lysates using ZNF182 Rabbit pAb ([TA383524]) at 1:1000 dilution.

Secondary antibody: HRP-conjugated Goat anti-Rabbit IgG (H+L) (AS014) at 1:10000 dilution.

Lysates/proteins: 25µg per lane.

Blocking buffer: 3% nonfat dry milk in TBST.

Detection: ECL Basic Kit (RM00020).

Exposure time: 30s.