

## Product datasheet for **TA383522**

### ZNF169 Rabbit Polyclonal Antibody

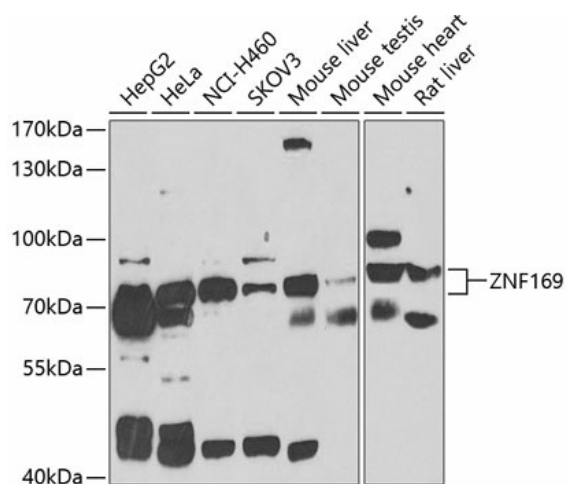
#### Product data:

|                         |   |
|-------------------------|---|
| Product Type:           | Primary Antibodies  |
| Applications:           | WB  |
| Recommended Dilution:   | WB,1:500 - 1:2000   |
| Reactivity:             | Human, Mouse, Rat   |
| Modifications:          | Unmodified  |
| Host:                   | Rabbit  |
| Isotype:                | IgG   |
| Clonality:              | Polyclonal  |
| Immunogen:              | Recombinant fusion protein containing a sequence corresponding to amino acids 1-85 of human ZNF169 (NP_919301.2). |
| Formulation:            | Buffer: PBS with 0.02% sodium azide,50% glycerol,pH7.3.   |
| Concentration:          | lot specific  |
| Purification:           | Affinity purification   |
| Conjugation:            | Unconjugated  |
| Storage:                | Store at -20°C. Avoid freeze / thaw cycles.   |
| Stability:              | Shelf life: one year from despatch.   |
| Predicted Protein Size: | 68kDa   |
| Gene Name:              | zinc finger protein 169   |
| Database Link:          | <a href="#">Entrez Gene 169841 Human Q14929</a>   |
| Background:             | May be involved in transcriptional regulation.  |
| Synonyms:               | MGC51961  |



[View online »](#)

## Product images:



Western blot analysis of extracts of various cell lines, using ZNF169 antibody (TA383522) at 1:1000 dilution. | Secondary antibody: HRP Goat Anti-Rabbit IgG (H+L) at 1:10000 dilution. | Lysates/proteins: 25ug per lane. | Blocking buffer: 3% nonfat dry milk in TBST. | Detection: ECL Basic Kit . | Exposure time: 90s.