

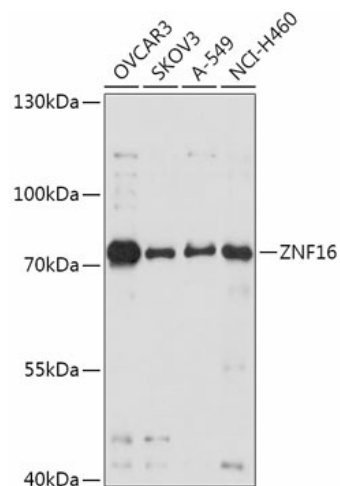
## Product datasheet for **TA383520S**

### ZNF16 Rabbit Polyclonal Antibody

#### Product data:

Product Type:	Primary Antibodies
Applications:	ELISA, WB
Recommended Dilution:	WB, 1:500 - 1:2000 ELISA, Recommended starting concentration is 1 µg/mL. Please optimize the concentration based on your specific assay requirements.
Reactivity:	Human
Modifications:	Unmodified
Host:	Rabbit
Isotype:	IgG
Clonality:	Polyclonal
Formulation:	Buffer: PBS with 0.02% sodium azide, 50% glycerol, pH 7.3.
Concentration:	lot specific
Purification:	Affinity purification
Conjugation:	Unconjugated
Storage:	Store at -20°C. Avoid freeze / thaw cycles.
Stability:	Shelf life: one year from despatch.
Predicted Protein Size:	76kDa
Gene Name:	zinc finger protein 16
Database Link:	<a href="#">Entrez Gene 7564 Human P17020</a>
Background:	The protein encoded by this gene contains multiple tandem zinc finger motifs. The encoded protein is involved in the differentiation of erythroid and megakaryocytic cells. This gene is located in a cluster of related genes on chromosome 8 encoding zinc finger proteins. Alternative splicing results in multiple transcript variants.
Synonyms:	KOX9


[View online »](#)

**Product images:**


Western blot analysis of various lysates using ZNF16 Rabbit pAb (TA383520S) at 1:1000 dilution. Secondary antibody: HRP-conjugated Goat anti-Rabbit IgG (H+L) (AS014) at 1:10000 dilution. Lysates/proteins: 25µg per lane. Blocking buffer: 3% nonfat dry milk in TBST. Detection: ECL Basic Kit (RM00020). Exposure time: 10s.