

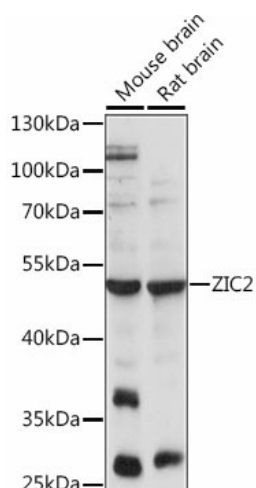
Product datasheet for **TA383497S**

ZIC2 Rabbit Polyclonal Antibody

Product data:

Product Type:	Primary Antibodies
Applications:	ELISA, WB
Recommended Dilution:	WB, 1:500 - 1:2000 ELISA, Recommended starting concentration is 1 µg/mL. Please optimize the concentration based on your specific assay requirements.
Reactivity:	Mouse, Rat
Modifications:	Unmodified
Host:	Rabbit
Isotype:	IgG
Clonality:	Polyclonal
Formulation:	Buffer: PBS with 0.02% sodium azide, 50% glycerol, pH 7.3.
Concentration:	lot specific
Purification:	Affinity purification
Conjugation:	Unconjugated
Storage:	Store at -20°C. Avoid freeze / thaw cycles.
Stability:	Shelf life: one year from despatch.
Predicted Protein Size:	55kDa
Gene Name:	Zic family member 2
Database Link:	O95409
Background:	<p>This gene encodes a member of the ZIC family of C2H2-type zinc finger proteins. This protein functions as a transcriptional repressor and may regulate tissue specific expression of dopamine receptor D1. Expansion of an alanine repeat in the C-terminus of the encoded protein and other mutations in this gene cause holoprosencephaly type 5. Holoprosencephaly is the most common structural anomaly of the human brain. A polyhistidine tract polymorphism in this gene may be associated with increased risk of neural tube defects. This gene is closely linked to a gene encoding zinc finger protein of the cerebellum 5, a related family member on chromosome 13.</p>
Synonyms:	HPE5


[View online »](#)

Product images:

Western blot analysis of various lysates using ZIC2 Rabbit pAb ([TA383497]) at 1:1000 dilution. Secondary antibody: HRP-conjugated Goat anti-Rabbit IgG (H+L) (AS014) at 1:10000 dilution. Lysates/proteins: 25µg per lane. Blocking buffer: 3% nonfat dry milk in TBST. Detection: ECL Enhanced Kit (RM00021). Exposure time: 30s.