

Product datasheet for **TA383494S**

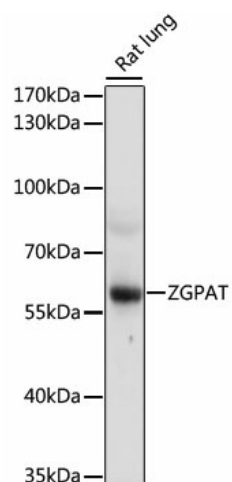
ZGPAT Rabbit Polyclonal Antibody

Product data:

Product Type:	Primary Antibodies
Applications:	ELISA, WB
Recommended Dilution:	WB, 1:500 - 1:1000 ELISA, Recommended starting concentration is 1 µg/mL. Please optimize the concentration based on your specific assay requirements.
Reactivity:	Mouse
Modifications:	Unmodified
Host:	Rabbit
Isotype:	IgG
Clonality:	Polyclonal
Formulation:	PBS with 0.05% proclin300, 50% glycerol, pH7.3.
Concentration:	lot specific
Purification:	Affinity purification
Conjugation:	Unconjugated
Storage:	Store at -20°C. Avoid freeze / thaw cycles.
Stability:	Shelf life: one year from despatch.
Predicted Protein Size:	57kDa
Gene Name:	zinc finger CCCH-type and G-patch domain containing
Database Link:	Q8N5A5
Background:	Enables DNA-binding transcription repressor activity, RNA polymerase II-specific and RNA polymerase II cis-regulatory region sequence-specific DNA binding activity. Involved in negative regulation of epidermal growth factor-activated receptor activity and negative regulation of transcription by RNA polymerase II. Located in nucleoplasm and plasma membrane.
Synonyms:	dj583P15.3; FLJ14972; GPATC6; GPATCH6; KIAA1847; MGC44880; ZC3H9; ZC3HDC9; ZIP



[View online »](#)

Product images:


Western blot analysis of lysates from Mouse spleen