

Product datasheet for **TA383490**

ZFYVE16 Rabbit Polyclonal Antibody

Product data:

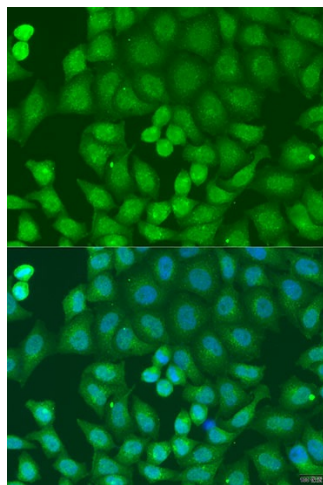
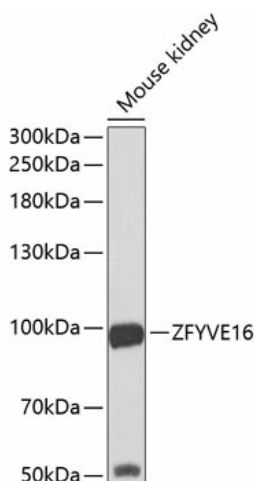
Product Type:	Primary Antibodies
Applications:	ICC/IF, WB
Recommended Dilution:	WB,1:500 - 1:2000 IHC,1:50 - 1:200 IF,1:50 - 1:200
Reactivity:	Human, Mouse
Modifications:	Unmodified
Host:	Rabbit
Isotype:	IgG
Clonality:	Polyclonal
Immunogen:	Recombinant fusion protein containing a sequence corresponding to amino acids 1-280 of human ZFYVE16 (NP_055548.3).
Formulation:	Buffer: PBS with 0.02% sodium azide,50% glycerol,pH7.3.
Concentration:	lot specific
Purification:	Affinity purification
Conjugation:	Unconjugated
Storage:	Store at -20°C. Avoid freeze / thaw cycles.
Stability:	Shelf life: one year from despatch.
Predicted Protein Size:	88kDa/168kDa
Gene Name:	zinc finger FYVE-type containing 16
Database Link:	Entrez Gene 9765 Human Q7Z3T8
Background:	This gene encodes an endosomal protein that belongs to the FYVE zinc finger family of proteins. The encoded protein is thought to regulate membrane trafficking in the endosome. This protein functions as a scaffold protein in the transforming growth factor-beta signaling pathway and is involved in positive and negative feedback regulation of the bone morphogenetic protein signaling pathway. Alternate splicing results in multiple transcript variants.



[View online »](#)

Synonyms: DKFZp686E13162; ENDOFIN; KIAA0305

Product images:



Western blot analysis of extracts of mouse kidney, using ZFYVE16 antibody (TA383490) at 1:1000 dilution. | Secondary antibody: HRP Goat Anti-Rabbit IgG (H+L) at 1:10000 dilution. | Lysates/proteins: 25ug per lane. | Blocking buffer: 3% nonfat dry milk in TBST. | Detection: ECL Basic Kit . | Exposure time: 90s.

Immunofluorescence analysis of U2OS cells using ZFYVE16 antibody (TA383490) at dilution of 1:100. Blue: DAPI for nuclear staining.