

Product datasheet for **TA383485S**

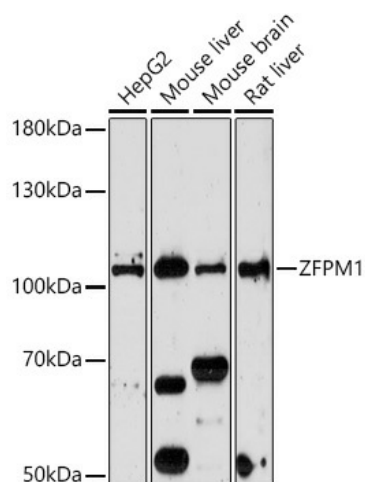
FOG1 (ZFPM1) Rabbit Polyclonal Antibody

Product data:

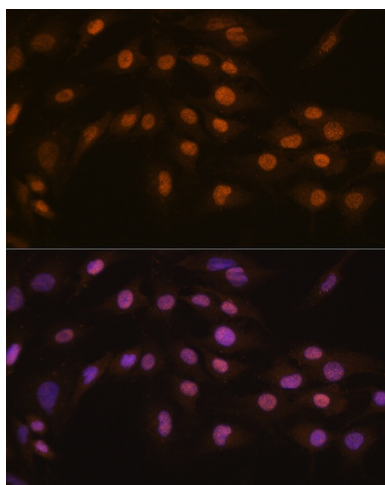
Product Type:	Primary Antibodies
Applications:	ELISA, ICC/IF, WB
Recommended Dilution:	WB, 1:500 - 1:1000 IF/ICC, 1:50 - 1:200 ELISA, Recommended starting concentration is 1 µg/mL. Please optimize the concentration based on your specific assay requirements.
Reactivity:	Human, Mouse, Rat
Host:	Rabbit
Isotype:	IgG
Clonality:	Polyclonal
Formulation:	PBS with 0.05% proclin300, 50% glycerol, pH7.3.
Concentration:	lot specific
Purification:	Affinity purification
Conjugation:	Unconjugated
Storage:	Store at -20°C. Avoid freeze / thaw cycles.
Stability:	Shelf life: one year from despatch.
Predicted Protein Size:	105kDa
Gene Name:	zinc finger protein, FOG family member 1
Database Link:	Entrez Gene 161882 Human Q8IX07
Background:	Enables RNA polymerase II-specific DNA-binding transcription factor binding activity and transcription corepressor activity. Involved in platelet formation; regulation of definitive erythrocyte differentiation; and regulation of gene expression. Part of transcription repressor complex.
Synonyms:	FOG; FOG-1; FOG1; ZNF89A; ZNF408

[View online »](#)

Product images:



Western blot analysis of various lysates



Immunofluorescence analysis of C6 cells using ZFPM1 Rabbit pAb ([TA383485]) at dilution of 1:100 (40x lens). Secondary antibody: Cy3-conjugated Goat anti-Rabbit IgG (H+L) (AS007) at 1:500 dilution. Blue: DAPI for nuclear staining.